

Study on the Regulation Mechanism of Lipopolysaccharide on Oxidative Stress and Lipid Metabolism of Bovine Mammary Epithelial Cells

Lin LI¹, Weibin TANG¹, Mei ZHAO², Binbin GONG¹, Meng CAO¹, Jianyuan LI¹

¹School of Biological Science and Engineering, Xingtai University, Xingtai, China, ²Department of Pathology, Xingtai People's Hospital, Hebei Medical University Affiliated Hospital, Xingtai, China

Received March 17, 2021

Accepted July 15, 2021

Epub Ahead of Print September 10, 2021

Summary

The long-term feeding of a high-concentrate diet (the concentrate ratio is greater than 60 %) leads to mammary gland inflammatory response in ruminants and decreased quality in dairy cows and affects the robust development of the dairy industry. The main reason is closely related to elevated lipopolysaccharide (LPS) in the body. In this experiment, a bovine mammary epithelial cell line (MAC-T) was used as a model, and LPS at different concentrations (0 ng/ml, 1 ng/ml, 10 ng/ml, 100 ng/ml, 1000 ng/ml, 10000 ng/ml) was added to the cells. The cell survival rate, oxidative stress indicators, total lipid droplet area, triglyceride content and key genes regulating lipid metabolism were detected by 3-(4,5)-dimethylthiazol-2-yl-2,5-diphenyltetrazolium bromide (MTT), assay kit, microscope observation and RT-PCR methods to explore the regulatory mechanism of mammary health and milk fat synthesis. The results showed that compared with those of the control group, the survival rates of cells were significantly decreased after 9 h of stimulation with 1000 ng/ml and 10000 ng/ml LPS ($P < 0.01$). The contents of superoxide dismutase (SOD), catalase (CAT) and total antioxidant capacity (T-AOC) in cells were significantly decreased ($P < 0.05$). Compared with that of the control group, the content of malondialdehyde (MDA) in cells was significantly increased ($P < 0.05$) after stimulation with 10000 ng/ml LPS for 9 h. After 9 h of stimulation with 100 ng/ml, 1000 ng/ml and 10000 ng/ml LPS, the total lipid drop area and triglyceride (TG) content of MAC-T cells were significantly decreased ($P < 0.05$). The expression levels of fatty acid synthesis-related genes Acetyl-CoA carboxylase (ACC) and Stearoyl-CoA desaturase 1 (SCD-1) were significantly decreased after 9 h of stimulation with 100 ng/ml, 1000 ng/ml and 10000 ng/ml LPS ($P < 0.05$), while the

expression levels of Fatty Acid synthetase (FAS) were significantly decreased after stimulation with 1000 ng/ml and 10000 ng/ml LPS ($P < 0.05$). TG synthesis by the related gene Diacylglycerol acyltransferase-1 (DGAT1) was significantly lower than that of the control group after stimulation with 1000 ng/ml and 10000 ng/ml LPS for 9 h ($P < 0.05$), and Diacylglycerol acyltransferase-2 (DGAT2) also showed a significant decrease after 10000 ng/ml LPS stimulation ($P < 0.05$). In conclusion, adding different concentrations of LPS to MAC-T cells not only led to a decrease in cell activity, resulting in oxidative damage, but also affected fatty acid and TG synthesis, which may ultimately be closely related to the decrease in milk fat synthesis.

Key words

Lipopolysaccharide • MAC-T • Oxidative stress damage • Triglyceride • Fatty acid biosynthesis

Corresponding author

L. Li, School of Biological Science and Engineering, Xingtai University, Xingtai 054001, China. E-mail: linl1991@163.com

Introduction

With the continuous improvements in living standards and changes in the nutrition structure, people's eating habits are gradually developing in healthier and more nutritious directions. Milk is a natural nutritional food, and the demand for milk has also changed from quantity to quality. At present, the huge market demand for milk processing products has accelerated the development of the dairy industry. However, during the peak lactation

period of ruminants, a high-yield performance cannot be met due to the lack of high-quality forage in China (Bush *et al.* 2020). Therefore, merchants usually increase the proportion of high-concentrate feed in the diet to meet the high energy requirements of lactating cows (Li *et al.* 2017, Li *et al.* 2018).

In studies, when the concentrate ratio is greater than 60 %, we consider it high-concentrate feeding. Due to the limited effective fiber content in high-concentrate daily food, this often leads to abnormal rumen fermentation in ruminants and body metabolism disorders, resulting in subacute ruminal acidosis (SARA) in ruminants (Orton *et al.* 2020, Sun *et al.* 2020). Moreover, high-concentrate feeding can also lead to a decrease in the pH value in the rumen, and the decreased pH value causes changes in the rumen environment, changes in microbiome composition and the accumulation of endotoxin (Wu *et al.* 2016, Isobe *et al.* 2017). At present, SARA is a problem of great concern to dairy farmers, as it leads to the release of a large amount of abnormal metabolism products, which leads to transfer of lipopolysaccharide (LPS) into the rumen, the blood, and then through the circulation into the dairy milk, causing inflammation, which eventually affects the quality of milk; this is a serious condition that can also lead to hoof lobitis, liver abscess and even death (Khiaosa *et al.* 2018, Chang *et al.* 2018, Wang *et al.* 2019). Therefore, the harm caused by high-concentrate feed has seriously affected the robust development of the dairy industry, and finding a way to control this negative effect is particularly important.

The world's dairy industry has long been challenged by mastitis, a serious inflammatory disease that not only reduces milk production but can also lead to incalculable economic losses. Mammary gland damage in ruminants is often caused by exogenous or endogenous bacterial infection, which triggers the immune response of dairy cows and induces the production of intracellular antigens. Wang *et al.* found that high-concentration diets can activate inflammatory signaling pathway proteins in the mammary glands of lactating dairy cows, which then induces mammary gland injury.

At present, most of the research in this area has focused on *in vivo* experiments in dairy cows, while there has been little research on mammary gland cells and specific mechanisms *in vitro*. Therefore, this experiment used bovine mammary epithelial cells as an experimental model. By adding different concentrations of LPS to the cells, the viability of the cells, the damage of oxidative stress, and the specific mechanism of regulating milk fat

synthesis were investigated. The prevention and treatment of dairy cow mastitis and improvements in milk quality provide a theoretical basis.

Methods

Cell culture and reagents

The bovine mammary epithelial cells line (MAC-T) were presented by Professor Yuanshu Zhang from Nanjing Agricultural University. MAC-T isolated in our previous research (Li *et al.* 2019) were cultured in complete DMEM/F12 medium were cultured in DMEM (10 % fetal bovine serum, 100 U/ml penicillin, 100 U/ml streptomycin and 4.5 g/l glucose), which was replaced every 24 h, in a cell incubator containing 5 % CO₂ at 37 °C. When the confluence reached 80-90 %, the cells were digested with a 0.25 % trypsin and 0.02 % EDTA digestive solution and centrifuged at 1500 RPM for 3 min. Then, the supernatant was carefully discarded, and the cells were seeded into 6-well, 12-well and 96-well plates.

Establishment of a MAC-T cell injury model

3-(4,5-Dimethylthiazol-2-yl)-2,5-diphenyltetrazolium bromide (MTT) assay

MAC-T cells were inoculated into 96-well plates (5×10⁴ cells/well), and serum-free medium containing different concentrations of LPS (0 ng/ml, 1 ng/ml, 10 ng/ml, 100 ng/ml, 1000 ng/ml, 10000 ng/ml) was added. The cells were cultured for 6 h in a cell incubator containing 5 % CO₂ at 37 °C (pre-experiment results). Then, 20 µl 5 mg/ml MTT solution was added to each well for another 4 h, the supernatant was discarded, 150 µl DMSO solution was added to each well, and the absorbance value at 490 nm was measured on an RT-6000 semiautomatic biochemical analyzer with a trace oscillator. Eight parallel wells were set up in each group.

Note: According to the results of the MTT test, the optimal stimulation time of LPS-induced inflammatory injury in MAC-T cells was 9 h.

Detection of oxidative stress indicators of MAC-T cells

When the confluence of the MAC-T cells in 12-well plates reached 70-80 %, the culture medium was discarded. After washing with PBS, serum-free medium containing LPS at different concentrations (0 ng/ml, 1 ng/ml, 10 ng/ml, 100 ng/ml, 1000 ng/ml, 10000 ng/ml) was added. The cells were incubated in a 37 °C incubator with 5 % CO₂ for 9 h, and 6 parallel wells were set up for

each group. The cells were then harvested, disrupted ultrasonically on ice and centrifuged at 2500×g for 10 min at 4 °C. The supernatants were collected and stored at -20 °C until subsequent analysis. The activities of superoxide dismutase (SOD), malondialdehyde (MDA), catalase (CAT), peroxidase (POD) and the total antioxidant capacity (T-AOC) content were determined spectrophotometrically using commercially available assay kits following the manufacturer's instructions (Jiancheng Bioengineering Institute, Nanjing, China), and the data were normalized to the protein concentration as determined by a bicinchoninic acid (BCA) protein assay kit (Jiancheng, Nanjing, China).

Oil Red O staining

Cells were cultured in 6-well plates (2×10^6 cells per well) and treated with different concentrations of LPS for 9 h. Briefly, cells were fixed with 10 % buffered formalin for at least 30 min. Next, cells were incubated with 60 % isopropanol for 15 min at room temperature and stained with Oil Red O solution for another 15 min. Cells were washed 4 times with deionized water and then allowed to air dry. To normalize cell number, cells were counterstained with haematoxylin for 5 min after Oil Red O staining. Slides were imaged with an optical microscope (Olympus BX53; Tokyo, Japan). Twenty photos were randomly selected from each group, and ten independent visual fields of each photo were used to analyse the count and area of lipid droplets using Image-Pro Plus 6.0 software (Media Cybernetics, Silver Spring, MD, USA).

Detection of triglyceride (TG) content

After incubation with different concentrations of LPS for 9 h, MAC-T cells were collected, and the cells were crushed by an ultrasonic processor. The cells were centrifuged at 4 °C at 2500×g for 10 min, and the supernatant was extracted. The TG content was determined with a triglyceride detection kit (Nanjing Jiancheng Bioengineering Institute, Jiancheng, Nanjing, China).

Expression of mRNA of key genes related to lipid metabolism and TG synthesis in MAC-T cells

After incubation with LPS at different concentrations for 9 h, MAC-T cells were collected, and total RNA was directly extracted from the collected cells by the TRIzol method (Invitrogen, USA). The concentration of total RNA of the samples was measured by a biophotometer, and the purity of total RNA was determined by analysing the OD₂₆₀/OD₂₈₀ values. The OD₂₆₀/OD₂₈₀ value needs to be within the range of 1.8-2.0. One microgram of total RNA was reverse transcribed to obtain cDNA, and the procedures were performed according to the instructions (Promega, USA).

Design of target gene and β -actin internal marker primers

According to GenBank sequences, primers for Acetyl-CoA carboxylase (ACC), Fatty Acid synthase (FAS), Stearyl-CoA desaturase-1 (SCD-1), Fatty Acid translocase (CD36), Diacylglycerol acyltransferase 1,2 (DGAT1,2) and the β -actin internal reference genes were designed by Primer Premier 5 software. Primers were synthesized by Shanghai Sangon Co., Ltd. The primer sequences of each gene are shown in Table 1.

Table 1. Prime sequence of targeted gene and β -Actin.

| Gene | Accession No. | Primers sequence (5'-3') | Orientation | Product size |
|----------------|----------------|--------------------------|-------------|--------------|
| β -Actin | NM_001034034 | GCTAACAGTCCGCCTAGAA | Forward | 180 bp |
| | | GCAGTCATCACCATCGGCAATGAG | Reverse | |
| ACC | XM_005219975.4 | GAGGGTTCAGTTCCAGAAAGTA | Forward | 179 bp |
| | | CCGCCCTGAAATGAGAGATG | Reverse | |
| FAS | NM_001285629.1 | GCACTACCACAACCCAAACCC | Forward | 161 bp |
| | | CGTTGGAGCCACCGAAGC | Reverse | |
| SCD-1 | NM_173959.4 | CCGCCCTGAAATGAGAGATG | Forward | 154 bp |
| | | AGGGCTCCCAAGTGTAACAGAC | Reverse | |
| CD36 | NM_001278621.1 | GACGGATGTACAGCGGTGAT | Forward | 155 bp |
| | | TCAGTGGTAACCAGTTGGAAGT | Reverse | |
| DGAT1 | XM018058728.1 | AAGCCCTTCAAGGACATG | Forward | 100 bp |
| | | AGAGCCAGTAGAAGAAGATG | Reverse | |
| DGAT2 | XM_004010192.3 | TTGGTTCTTGTTACGCTCAC | Forward | 251 bp |
| | | GTAGATTCTGTCTCTGCTTGTTCA | Reverse | |

Fluorescence quantitative PCR amplification conditions

Fluorescence quantitative PCR was used for analysis, and $2^{-\Delta\Delta CT}$ was used to calculate the relative expression level of the target mRNA. The PCR conditions were as follows: one cycle at 95 °C for 3 min, followed by 40 cycles of 95 °C for 20 s, 60 °C for 30 s and 72 °C for 30 s. After the PCR was completed, the specificity of the PCR product was verified by the melting curve, and each sample was repeated three times.

Data analysis and statistics

All results are expressed as the means \pm the standard error of the mean (SEM). Treatment differences were subjected to Duncan's multiple comparison tests. Differences were considered significant at $P < 0.05$. All

statistical analyses were performed with SPSS 13.0 for Windows (SPSS, Chicago, IL).

Results

Effects of LPS on the cell viability of MAC-T cells

The relative cell viability was determined by an MTT colorimetric assay. The results showed that the relative cell viability started to decrease from 6 h after the cells were treated with LPS. The relative cell viability in the 1000 ng/ml ($P < 0.01$) and 10000 ng/ml ($P < 0.01$) groups was significantly lower than that of the control group at 9 h (Fig. 1). According to the test results, the optimal stimulation time for LPS-induced inflammatory injury of MAC-T cells was 9 h.

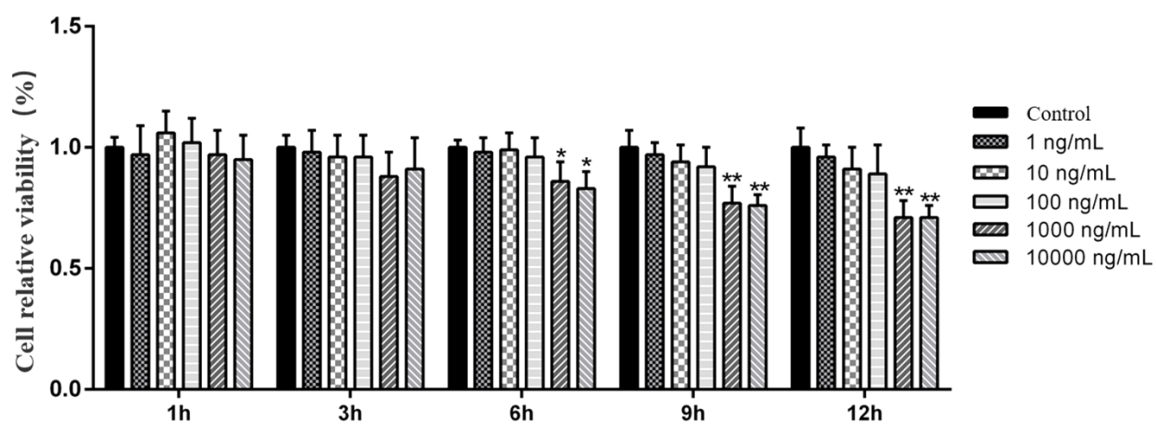


Fig. 1. Effects of LPS on the viability of MAC-T cells after 9 h of stimulation. Concentration: %. Data are presented as the means \pm SEM. * $P < 0.05$ and ** $P < 0.01$ compared with the control group (0 ng/ml LPS).

Table 2. Effect of lipopolysaccharide (LPS) on the oxidative stress index of MAC-T cells after 9 h of stimulation.

| Items | Control | 1 ng/ml | 10 ng/ml | 100 ng/ml | 1000 ng/ml | 10000 ng/ml |
|--------------------|------------------|------------------|------------------|------------------|------------------|------------------|
| SOD, U/mg prot. | 34.3 \pm 3.16 | 30.3 \pm 2.12 | 29.3 \pm 2.17 | 31.3 \pm 3.51 | 20.3 \pm 2.36* | 18.3 \pm 2.13* |
| MDA, nmol/mg prot. | 2.38 \pm 0.29 | 2.48 \pm 0.19 | 2.50 \pm 0.41 | 2.40 \pm 0.34 | 2.60 \pm 0.24 | 3.50 \pm 0.32* |
| CAT, U/mg prot. | 5.33 \pm 0.42 | 5.11 \pm 0.45 | 4.99 \pm 0.48 | 5.12 \pm 0.47 | 4.16 \pm 0.47* | 4.01 \pm 0.46* |
| POD, U/mg prot. | 15.12 \pm 1.29 | 15.11 \pm 1.23 | 14.93 \pm 1.49 | 14.83 \pm 1.40 | 14.74 \pm 1.32 | 14.89 \pm 1.48 |
| T-AOC, U/ml | 80.1 \pm 8.36 | 79.2 \pm 7.97 | 75.6 \pm 7.99 | 73.7 \pm 8.53 | 63.3 \pm 5.44* | 60.9 \pm 7.11* |

Effect of LPS on the oxidative stress index of MAC-T cells

As shown in Table 2, the activities of SOD and T-AOC were significantly decreased ($P < 0.05$) in the 1000 ng/ml and 10000 ng/ml LPS-treated groups compared with the control group. Compared with that in the control group, the MDA content in cells was significantly increased after 9 h of stimulation with 10000 ng/ml LPS ($P < 0.05$).

Effect of LPS on lipid droplet accumulation in MAC-T cells

To analyse the distribution of lipid droplets in cells after LPS treatment, Oil Red O staining was used and showed that the total area of lipid droplets was significantly decreased in the 100 ng/ml, 1000 ng/ml and 10000 ng/ml LPS-treated groups compared to the control group (Fig. 2; $P < 0.05$).

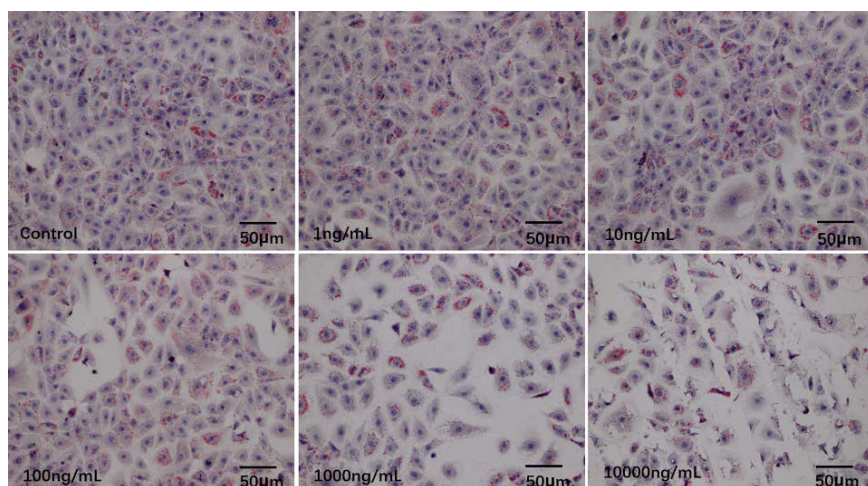
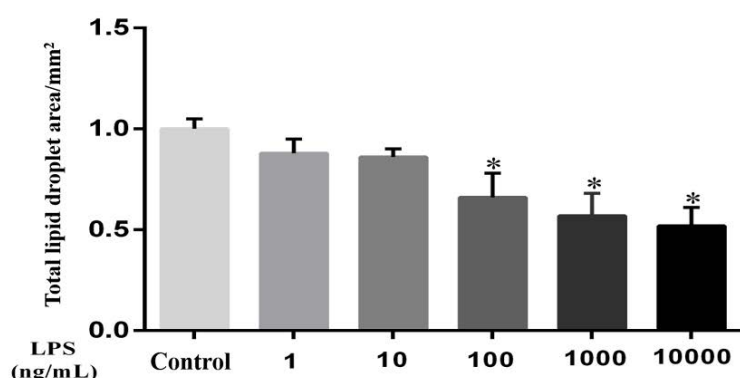


Fig. 2. Effect of LPS on the lipid drop area of MAC-T cells after 9 h of stimulation. Concentration: mm². Data are presented as the means \pm SEM. * $P < 0.05$ compared with the control group (0 ng/ml LPS).



Analysis of TG assay results of MAC-T cells

As shown in Fig. 3, compared with the control group, the TG content in MAC-T cells was significantly decreased after 9 h of stimulation with 100 ng/ml, 1000 ng/ml and 10000 ng/ml LPS ($P < 0.05$). In summary, these results suggest that LPS can reduce lipid production in MAC-T cells and then affect TG production.

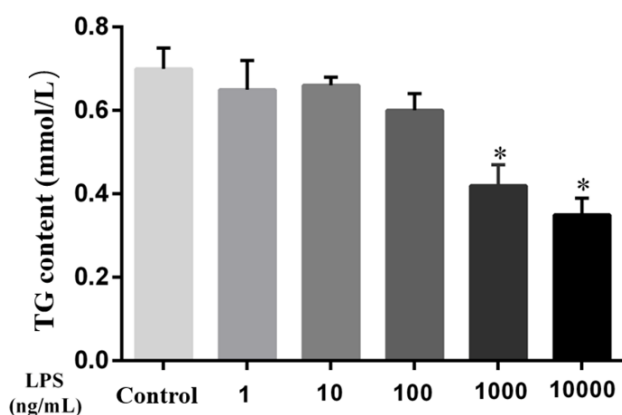


Fig. 3. Effect of LPS on the triglyceride (TG) content of MAC-T cells after 9 h of stimulation. Concentration: mmol/l. Data are presented as the means \pm SEM. * $P < 0.05$ compared with the control group (0 ng/ml LPS).

The mRNA expression of enzymes related to lipid metabolism and TG synthesis in MAC-T cells was affected by LPS

As shown in Fig. 4 and Fig. 5, the mRNA levels of key enzymes of fatty acid activation, transport, and synthesis and TG synthesis in MAC-T cells were assessed. Compared with the control group, the genes related to ACC and SCD-1 were significantly decreased after 9 h of stimulation with 100 ng/ml, 1000 ng/ml and 10000 ng/ml LPS ($P < 0.05$). After 9 h of 1000 ng/ml and 1000 ng/ml LPS stimulation, the FAS gene was also significantly decreased ($P < 0.05$). Of the related genes that synthesize TG, DGAT1 was significantly decreased compared with the control group after 9 h stimulation with 1000 ng/ml and 10000 ng/ml LPS ($P < 0.05$), and DGAT2 was decreased significantly after 9 h stimulation with 10000 ng/ml LPS ($P < 0.05$). It is suggested that LPS can affect the de novo synthesis of fatty acids and the content of TG in MAC-T cells, ultimately affecting the production of milk fat.

Discussion

Milk contains all the nutrients necessary for human growth and metabolism. It provides not only

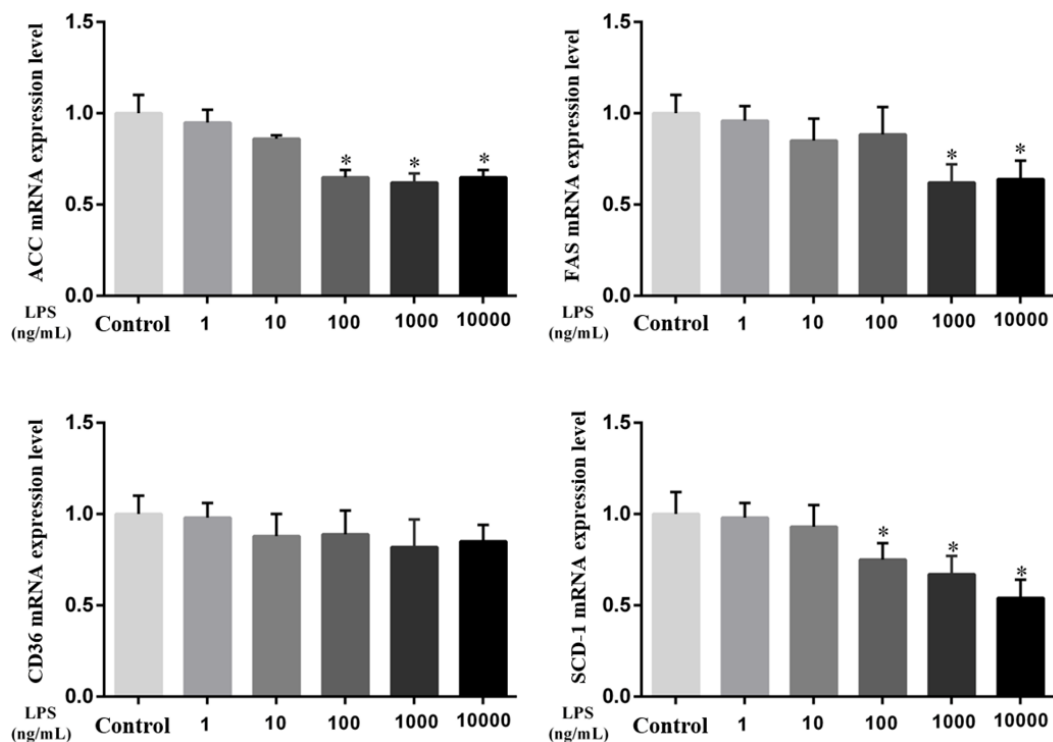


Fig. 4. Effect of LPS on lipid metabolism-related genes in MAC-T cells after 9 h of stimulation. Acetyl-CoA carboxylase (ACC), Fatty Acid synthase (FAS), Fatty Acid translocase (CD36), Stearyl-CoA desaturase-1 (SCD-1). Data are presented as the means \pm SEM. * $P < 0.05$ compared with the control group (0 ng/ml LPS).

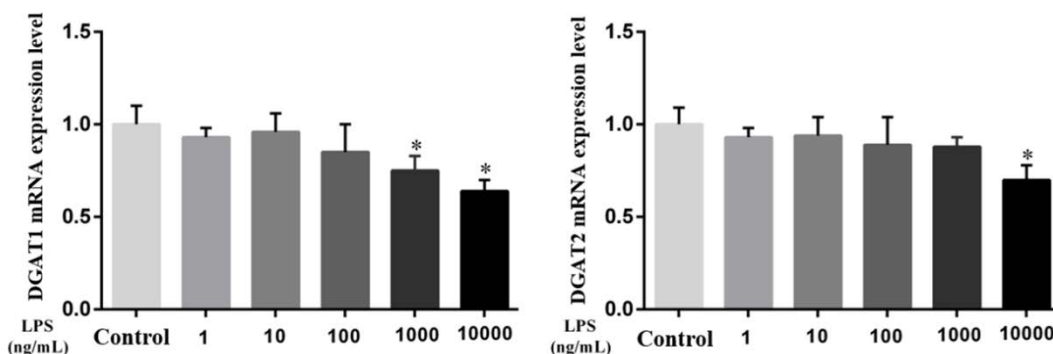


Fig. 5. Effect of LPS on TG biosynthesis-related genes in MAC-T cells after 9 h of stimulation. Diacylglycerol acyltransferase 1, 2 (DGAT1, 2). Data are presented as the means \pm SEM. * $P < 0.05$ compared with the control group (0 ng/ml LPS).

calcium but also lipids and proteins that help maintain the balance of nutrients in the body (Hageman *et al.* 2019). However, SARA induced by high-concentrate feeding can destroy the normal structure of rumen biological flora, resulting in a large number of gram-negative bacteria, and the main pathogenic component of gram-negative bacteria is lipopolysaccharide (Guo *et al.* 2017, Chang *et al.* 2018). When high levels of LPS enter the bloodstream, this can cause endotoxaemia and systemic inflammatory reactions (Memon *et al.* 2019). The cause of mastitis is due to the majority of the main pathogens moving from the milk duct into the mammary gland,

which causes inflammation of the mammary gland. *Escherichia coli* is one of the main pathogens that causes clinical mastitis in dairy cows. Mastitis caused by *Escherichia coli* usually leads to an impaired milk production function, a sharp increase in somatic cells in milk, a significant decrease in milk yield, and even the death of animals. In this study, compared with the control group, MAC-T cells were stimulated with different concentrations of LPS for 1, 3, 6, 9 and 12 h. The relative survival rate of cells treated with 1000 ng/ml LPS and 10000 ng/ml LPS significantly decreased after 6 h, and after 9 and 12 h, there was an extremely significant

decrease. Therefore, the optimal stimulation time of LPS-induced MAC-T inflammatory injury was 9 h.

LPS, also known as endotoxin, is an outer membrane component of gram-negative bacteria such as *Escherichia coli*. Studies have found that LPS can change the homeostasis of MECs and improve the expression of inflammatory factors, which can cause serious damage to breast tissue. Current studies have confirmed that when SARA occurs in the body, it often leads to a large amount of LPS in the body, and LPS can enter the breast through the circulating blood and cause oxidative damage to the mammary gland (Li *et al.* 2018). Oxidation is vital to the body, but excessive oxidation can cause tissue damage. Reactive oxygen species are produced by O₂ in a variety of ways. Under healthy conditions, there is a good balance between the formation and transformation of the reactive oxygen (ROS) antioxidant system. However, oxidative stress occurs when ROS production is accelerated or the mechanisms for removing ROS are impaired. When the production of ROS exceeds the antioxidant defence capacity or the optimal level of antioxidants is lacking, these substances may cause oxidative stress. In livestock, several diseases, such as pneumonia and inflammation of the small intestine or mammary glands, are associated with oxidative stress (Hsu *et al.* 2002, Kelly *et al.* 2015). Mammary gland oxidative injury and mastitis occur with increases in serum oxidative stress-related indicators, such as MDA, nitric oxide (NO) and inducible nitric oxide synthase (iNOS) (Islam *et al.* 2017). As an antioxidant protein, SOD can scavenge active oxygen free radicals in a timely manner, which plays a role by reducing the high level of superoxide free radicals induced by extracellular stimuli (such as ultraviolet radiation) (Mosa *et al.* 2018, Hao *et al.* 2019, Tan *et al.* 2019). The MDA content is an indicator of peroxidation of the cell membrane. CAT, an enzyme that catalyses the breakdown of hydrogen peroxide into oxygen and water, is present in the peroxisomes of cells. In this study, after stimulation with 1000 ng/ml and 10000 ng/ml LPS for 9 h, the SOD, CAT and T-AOC contents in the cells significantly decreased compared with the control group. However, after 9 h of stimulation with 10000 ng/ml LPS, the MDA content in cells significantly increased. These results suggested that LPS not only led to oxidative stress in cells but also caused more cells to undergo abnormal apoptosis.

In ruminants, milk fat synthesis is the main energy cost in milk production and plays a central role in determining the quality of milk products and milk energy

distribution. In ruminants, milk fat (3-5 %) is mainly in the form of milk fat globule (MFG, content is 87 % of milk fat). Milk fat globules (diameter 0.1-20 µm) are composed of nonpolar lipids (mainly TG) encapsulated in a milk fat globule membrane (MFGM) composed of polar lipids. LPS in the blood can be transferred to the mammary gland through the mammary artery, causing damage to the mammary epithelial cells and activating the inflammatory pathway in the mammary gland tissue. This will reduce milk fat synthesis and utilization of breast milk component precursors (fatty acids, glucose, etc.). These precursors are more commonly used to resist the inflammatory state of breast tissue and are consumed, which ultimately leads to a decline in milk quality.

Milk fat synthesis in the mammary gland is a complex biological process. The de initio synthesis of fatty acids involves the activation of acetic acid into acetyl-CoA and then the generation of malonate monoacyl-CoA under the action of ACC. Next, under the action of FAS, the carbon chain is prolonged, and finally, a fatty acid containing 16 carbon atoms is synthesized, after which the carbon chain extension is terminated. In contrast, β-hydroxybutyric acid is first converted to butyryl coenzyme A, and then the carbon chain is extended (Salie *et al.* 2016, Kim *et al.* 2017). ACC is the first key enzyme that catalyses the de novo synthesis of fatty acids from the substrate acetyl-CoA. FAS is a key metabolic enzyme for the de initio growth of the chain of the fatty acids in the presence of the reducing substrate nicotinamide adenine dinucleotide phosphate (NADPH), which plays a key role in the regulation of energy, metabolism and balance in the body. SCD is a key medium in fatty acid biosynthesis (Zhu *et al.* 2018, Conte *et al.* 2010). Milk TG composition can also be influenced by genetic factors. Milk fat TG is synthesized via the glycerol-3-phosphate pathway, where the enzyme DGAT1 is of interest because of its role in the final step of triglyceride synthesis and because it is polymorphic in many dairy cattle populations (Huang *et al.* 2021, Xu *et al.* 2016). Moreover, previous studies have shown that during lactation in mammals, the key enzymes involved in fatty acid synthesis in mammary epithelial cells are significantly upregulated.

In this experiment, compared with the control group, the total content of lipid droplets and the content of TG in MAC-T cells were significantly decreased after 9 h of stimulation with 100 ng/ml, 1000 ng/ml and 10000 ng/ml LPS. The mRNA expression levels of key genes in fatty acid synthesis, including ACC and SCD-1,

were significantly decreased after 9 h of 100 ng/ml, 1000 ng/ml and 10000 ng/ml LPS stimulation compared with the control group. In addition, FAS expression was significantly decreased after stimulation with 1000 ng/ml and 10000 ng/ml LPS. The study of TG synthesis-related enzymes found that the DGAT1 expression levels after stimulation with 1000 ng/ml and 10000 ng/ml LPS for 9 h were significantly decreased, and the DGAT2 expression level also showed a significant decrease after stimulation with 10000 ng/ml LPS for 9 h. It is suggested that LPS can decrease the TG content in MAC-T cells and affect the activities of the lipid synthesis pathway and key enzymes of TG synthesis. This results in a decrease in TG content, which affects the synthesis of milk fat.

In summary, the results of this study showed that

the addition of LPS to MAC-T cells caused not only a decrease in cell activity but also cell oxidative damage. Adding different concentrations of LPS to MAC-T cells not only caused a decrease in cell activity, resulting in cell oxidative damage, but also affected fatty acid and TG synthesis, which may ultimately be closely related to the decrease in milk fat synthesis.

Conflict of Interest

There is no conflict of interest.

Acknowledgements

This work was supported by the Hebei Youth Natural Science Foundation (C2020108002).

References

- BUSH SJ, McCULLOCH MEB, LISOWSKI ZM, MURIUKI C, HUME DA: Species-specificity of transcriptional regulation and the response to lipopolysaccharide in mammalian macrophages *Front Cell Dev Biol* 8: 661, 2020. <https://doi.org/10.3389/fcell.2020.00661>
- CHANG G, YAN J, MA N, LIU X, DAI H, BILA LMS, SHEN X: Dietary sodium butyrate supplementation reduces high-concentrate diet feeding-induced apoptosis in mammary cells in dairy goats. *J Agric Food Chem* 66: 2101-2107, 2018. <https://doi.org/10.1021/acs.jafc.7b05882>
- CHANG G, WANG L, MA N, ZHANG WW, ZHANG HM, DAI HY, SHEN XZ: Histamine activates inflammatory response and depresses casein synthesis in mammary gland of dairy cows during SARA. *BMC Vet Res* 14: 1-9, 2018. <https://doi.org/10.1186/s12917-018-1491-3>
- CONTE G, MELE M, CHESSA S, CASTIGLIONI B, SERRAA, PAGNACCO G: Diacylglycerol acyltransferase 1, stearoyl-CoA desaturase 1, and sterol regulatory element binding protein 1 gene polymorphisms and milk fatty acid composition in Italian brown cattle. *J Dairy Sci* 93: 753-763, 2010. <https://doi.org/10.3168/jds.2009-2581>
- GUO J, CHANG G, ZHANG K, XU L, JIN D, BILAL MS, SHEN X: Rumen-derived lipopolysaccharide provoked inflammatory injury in the liver of dairy cows fed a high-concentrate diet. *Oncotarget* 8: 46769, 2017. <https://doi.org/10.18632/oncotarget.18151>
- HAGEMAN J HJ, DANIELSEN M, NIEUWENHUIZEN AG, FEITSMA AL, DALSGAARD TK: Comparison of bovine milk fat and vegetable fat for infant formula: Implications for infant health. *Int Dairy J* 92: 37-49, 2019. <https://doi.org/10.1016/j.idairyj.2019.01.005>
- HAO M, LIU R: Molecular mechanism of CAT and SOD activity change under MPA-CdTe quantum dots induced oxidative stress in the mouse primary hepatocytes. *Spectrochim Acta A Mol Biomol Spectrosc* 220: 117104, 2019. <https://doi.org/10.1016/j.saa.2019.05.009>
- HSU HY, WEN MH: Lipopolysaccharide-mediated reactive oxygen species and signal transduction in the regulation of interleukin-1 gene expression. *J Biol Chem* 277: 22131-22139, 2002. <https://doi.org/10.1074/jbc.M111883200>
- HUANG JS, GUO BB, LIN FF, ZENG LM, WANG HY: A novel low systemic diacylglycerol acyltransferase 1 inhibitor, Yhhu2407, improves lipid metabolism. *Eur J Pharm Sci* 158: 105683, 2021. <https://doi.org/10.1016/j.ejps.2020.105683>
- ISLAM MT: Oxidative stress and mitochondrial dysfunction-linked neurodegenerative disorders. *Neurol Res* 39: 73-82, 2017. <https://doi.org/10.1080/01616412.2016.1251711>
- ISOBE N: Control mechanisms for producing antimicrobial factors in ruminant mammary gland. *Anim Sci J* 88: 937-943, 2017. <https://doi.org/10.1111/asj.12808>

- KHIAOSA-ARD R, ZEBELI Q: Diet-induced inflammation: From gut to metabolic organs and the consequences for the health and longevity of ruminants. *Res Vet Sci* 120: 17-27, 2018. <https://doi.org/10.1016/j.rvsc.2018.08.005>
- KELLY B, TANNAHILL GM, MURPHY MP, LUKE AJ: Metformin inhibits the production of reactive oxygen species from NADH: ubiquinone oxidoreductase to limit induction of interleukin-1 β (IL-1 β) and boosts interleukin-10 (IL-10) in lipopolysaccharide (LPS)-activated macrophages. *J Biol Chem* 290: 20348-20359, 2015. <https://doi.org/10.1074/jbc.M115.662114>
- KIM CW, ADDY C, KUSUNOKI J, ANDERSON NN, DEJAS, FU X, BURGESS SC, LI C, RUDDY M, CHAKRAVARTHY M: Acetyl CoA carboxylase inhibition reduces hepatic steatosis but elevates plasma triglycerides in mice and humans: a bedside to bench investigation. *Cell Metab* 26: 394-406, 2017. <https://doi.org/10.1016/j.cmet.2017.07.009>
- LI L, CAO Y, XIE ZL, ZHANG Y: A high-concentrate diet induced milk fat decline via glucagon-mediated activation of AMP-activated protein kinase in dairy cows. *Sci Rep* 7: 44217, 2017. <https://doi.org/10.1038/srep44217>
- LI L, HE ML, LIU Y, ZHANG YS: Buffering agent induced lactose content increases via growth hormone mediated activation of gluconeogenesis in lactating goats. *Physiol Res* 67: 317-329, 2018. <https://doi.org/10.33549/physiolres.933715>
- LI L, HE ML, WANG K, ZHANG YS: Buffering agents via insulin-mediated activation of PI3K/AKT signaling pathway to regulate lipid metabolism in lactating goats. *Physiol Res* 67: 753-764, 2018. <https://doi.org/10.33549/physiolres.933698>
- LI L, WANG HH, NIE XT, JIANG WR, ZHANG YS: Sodium butyrate ameliorates lipopolysaccharide -induced cow mammary epithelial cells from oxidative stress damage and apoptosis. *J Cell Biochem* 120: 2370-2381, 2019. <https://doi.org/10.1002/jcb.27565>
- MEMON MA, WANG Y, XU T, MA NN: Lipopolysaccharide induces oxidative stress by triggering MAPK and Nrf2 signalling pathways in mammary glands of dairy cows fed a high-concentrate diet. *Microb Pathog* 128: 268-275, 2019. <https://doi.org/10.1016/j.micpath.2019.01.005>
- MOSA KA, EL-NAGGAR M, RAMAMOORTHY K, ALAWADHI H, HANI H: Copper nanoparticles induced genotoxicity, oxidative stress, and changes in superoxide dismutase (SOD) gene expression in cucumber (*Cucumis sativus*) plants. *Front Plant Sci* 9: 1-13, 2018. <https://doi.org/10.3389/fpls.2018.00872>
- ORTON T, ROHN K, BREVES G, BREDE M: Alterations in fermentation parameters during and after induction of a subacute rumen acidosis in the rumen simulation technique. *J Anim Physiol Anim Nutr* 104: 1678-1689, 2020. <https://doi.org/10.1111/jpn.13412>
- SALIE MJ, THELEN JJ: Regulation and structure of the heteromeric acetyl-CoA carboxylase. *Biochim Biophys Acta* 1861: 1207-1213, 2016. <https://doi.org/10.1016/j.bbalip.2016.04.004>
- SUN X, LUO S, JIANG C, TANG Y, XU C: Sodium butyrate reduces bovine mammary epithelial cell inflammatory responses induced by exogenous lipopolysaccharide, by inactivating NF- κ B signaling. *J Dairy Sci* 103: 8388-8397, 2020. <https://doi.org/10.3168/jds.2020-18189>
- TAN K, ZHANG B, MA H, LI S, ZHENG H: Oxidative stress responses of golden and brown noble scallops *Chlamys nobilis* to acute cold stress. *Fish Shellfish Immunol* 95: 349-356, 2019. <https://doi.org/10.1016/j.fsi.2019.10.047>
- WU T, WANG C, DING L, SHEN Y, CUI H, WANG M, WANG H: Arginine relieves the inflammatory response and enhances the casein expression in bovine mammary epithelial cells induced by lipopolysaccharide. *Mediators Inflamm* 2016: 1-10, 2016. <https://doi.org/10.1155/2016/9618795>
- WANG Y, ZHANG W, MA N, WANG LL, DAI HY, BILAL MS, ANIMESH CR, SHEN XZ: Overfeeding with a high-concentrate diet activates the NOD1-NF- κ B signalling pathway in the mammary gland of mid-lactating dairy cows. *Microb Pathog* 128: 390-395, 2019. <https://doi.org/10.1016/j.micpath.2019.01.038>
- XU HF, LUO J, ZHAO WS, YANG YC, TIAN HB, SHI HB, BIONAZ M: Overexpression of SREBP1 (sterol regulatory element binding protein 1) promotes de novo fatty acid synthesis and triacylglycerol accumulation in goat mammary epithelial cells. *J Dairy Sci* 99: 783-795, 2016. <https://doi.org/10.3168/jds.2015-9736>
- ZHU X, YAN H, XIA M, X CHANG, XU X, LIU W, SUN X, LU Y, BIAN H, LI X: Metformin attenuates triglyceride accumulation in HepG2 cells through decreasing stearyl-coenzyme A desaturase 1 expression. *Lipids Health Dis* 17: 1-9, 2018. <https://doi.org/10.1186/s12944-018-0762-0>