

Fig. S1. The study flow chart. TAC = transverse aortic constriction; RSD = renal sympathetic denervation; Echo = echocardiography; BC = blood collection; wks = weeks

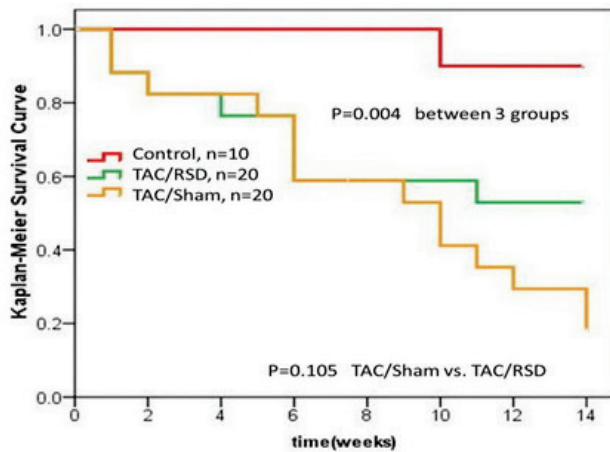


Fig. S2. Kaplan-Meier survival analysis. Survival over the 14-week experiment was analyzed according to the daily recording of deaths by the standard Kaplan-Meier analysis with the log rank test.

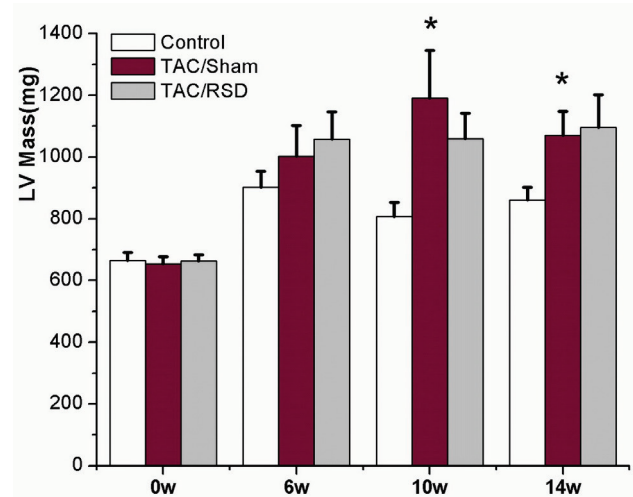


Fig. S3. Changes of left ventricular mass. Bar graph showing the changes of left ventricular mass (LV Mass). Values are the mean \pm SE. * $P < 0.05$ vs. Control group