

Plasma Membrane Density of GABA_B-R1a, GABA_B-R1b, GABA-R2 and Trimeric G-proteins in the Course of Postnatal Development of Rat Brain Cortex

K. DLOUHÁ¹, D. KAGAN¹, L. ROUBALOVÁ¹, H. UJČÍKOVÁ¹, P. SVOBODA¹

¹Institute of Physiology, Academy of Sciences of the Czech Republic, Prague, Czech Republic

Received April 11, 2013

Accepted June 18, 2013

On-line September 10, 2013

Summary

With the aim to understand the onset of expression and developmental profile of plasma membrane (PM) content /density of crucial components of GABA_B-R signaling cascade, GABA_B-R1a, GABA_B-R1b, GABA_B-R2, G_{i1}/G_{i2}α, G_{i3}α, G_oα, G_zα and Gβ subunit proteins were determined by quantitative immunoblotting and compared in PM isolated from brain cortex of rats of different ages: between postnatal-day-1 (PD1) and 90 (PD90). PM density of GABA_B-R1a, GABA_B-R2, G_{i1}/G_{i2}α, G_{i3}α, G_oα, G_zα and Gβ was high already at birth and further development was reflected in parallel decrease of both GABA_B-R1a and GABA_B-R2 subunits. The major decrease of GABA_B-R1a and GABA_B-R2 occurred between the birth and PD15: to 55 % (R1a, **) and 51 % (R2, **), respectively. Contrarily, PM level of the cognate G-proteins G_{i1}/G_{i2}α, G_{i3}α, G_oα, G_zα and Gβ was unchanged in the course of the whole postnatal period of brain cortex development. Maturation of GABA_B-R cascade was substantially different from ontogenetic profile of prototypical plasma membrane marker, Na, K-ATPase, which was low at birth and further development was reflected in continuous increase of PM density of this enzyme. Major change occurred between the birth and PD25. In adult rats, membrane content of Na, K-ATPase was 3-times higher than around the birth.

Key words

GABA_B-R • Postnatal development • Rat brain cortex • G-proteins
• Na, K-ATPase

Corresponding author

P. Svoboda, Institute of Physiology, Academy of Sciences of the Czech Republic, Vídeňská 1083, 142 20 Prague 4, Czech Republic.
Fax: + 420-241062488. E-mail: svobodap@biomed.cas.cz

Introduction

GABA_B-receptors were defined as a class of bicuculline-insensitive GABA receptors for which (-)-baclofen is a specific agonist and phaclofen and 2-hydroxy-saclofen represent specific antagonists (Hill and Bowery 1981, Bowery *et al.* 1985, 1987, Kerr and Ong 1995). These receptors are not physically bound to ionic channels and belong to the family of G-protein coupled receptors, GPCR (Kerr and Ong 1995). Thus, the primary signal initiated by binding of GABA to GABA_B-R is transmitted further downstream by trimeric G-proteins.

The central nervous system is known to contain high levels of all trimeric Gα subunits. The three species of inhibitory G-proteins, G_iα1, G_iα2 and G_iα3 (Mumby *et al.* 1988), the long (G_sαL) and short (G_sαS) variants of the stimulatory G_sα protein (Bray *et al.* 1986), phosphoinositidase C-linked G_qα and G₁₁α proteins (Milligan 1993) as well as representatives of G₁₂α/G₁₃α family of G-proteins (Harhammer *et al.* 1994, 1996) were identified in brain tissue in high amounts. The major G-proteins of brain, however, are members of G_oα family. The two isoforms of G_oα subunits, G_oα1 and G_oα2, represent up to 1 % of the total membrane protein in the brain tissue (Giershick *et al.* 1986, Goldsmith *et al.* 1987, 1988, Milligan 1988, 1990). Accordingly, the content of Gβ subunits is very high in brain (Asano *et al.* 1988). It should be also mentioned that the complexity of biochemical composition of the brain tissue is not limited to G-proteins, but it is equally high for adenylylcyclase (AC) molecules because all the isoforms (ACI-X) of this

key regulatory enzyme of GPCR-initiated cascades were identified in CNS and their PM content was found to respond readily to physiological state of experimental animals (Ujcikova *et al.* 2011).

Regulation of the specificity and efficiency of coupling between GPCRs and trimeric G-proteins in natural tissue such as brain is therefore highly complex. GPCRs usually exert their action through activation of preferential G-proteins (in a given cell type), however, a single type of receptor can be also coupled to several G-proteins (Boege *et al.* 1991, Gerhardt and Neubig 1991, Raymond 1995, Dascal 1997, Gudermann *et al.* 1997, Hildebrandt 1997). Furthermore, the given type of G-protein may be activated by different receptors. Under such conditions, it is reasonable to assume that a complicated functional arrangement denominated as cross talk among individual members of G-protein-mediated cascades exists and provides an effective regulatory mechanism for the convergence or divergence of actions of a single neurotransmitter in nervous tissue.

Receptor-initiated activation of G-proteins results in the release of free $G\alpha$ and $G\beta\gamma$ subunits from the non-active $G\alpha\beta\gamma$ trimer; subsequently, both free $G\alpha$ and $G\beta\gamma$ subunits mediate the signal transmission further downstream. Thus, besides the functional networks of $G_{i1\alpha}$ -, $G_{i2\alpha}$ -, $G_{i3\alpha}$ -, $G_{o1\alpha}$ - and $G_{o2\alpha}$ -mediated signaling, $G\beta\gamma$ -mediated cascades represent no less complicated regulatory circuits. The main $G\beta\gamma$ -regulated effectors of presynaptic $GABA_B$ -receptors are P/Q- and N-type voltage-dependent Ca^{2+} channels (Chen and van den Pol 1998, Bussières and El Manira 1999, Barral *et al.* 2000). $GABA_B$ -receptors inhibit these Ca^{2+} channels at both excitatory and inhibitory terminals, thereby restricting neurotransmitter release. Depending on whether the terminal releases an inhibitory or excitatory neurotransmitter, the presynaptic $GABA_B$ receptors increase or decrease the excitability of the postsynaptic neuron (Pinard *et al.* 2010).

Presynaptic $GABA_B$ receptors restrict neurotransmitter release not only by inhibiting Ca^{2+} channels but also by retarding the recruitment of synaptic vesicles (Sakaba and Neher 2003). More recent evidence suggests that presynaptic $GABA_B$ -receptors may couple to inwardly rectifying Kir3-type K^+ channels (also designated GIRK channels) to inhibit glutamate release (Ladera *et al.* 2008, Fernandez-Alacid *et al.* 2009); however, Kir3 channels are generally considered as the main effectors of postsynaptic $GABA_B$ -receptors (Pinard *et al.* 2010).

Binding of GABA to postsynaptic $GABA_B$ -R results in activation of Kir3 channels, induction of K^+ efflux and hyperpolarization of postsynaptic membrane. This change of membrane potential shunts excitatory currents in a non-specific way. Finally, under such conditions, the so-called slow inhibitory postsynaptic potentials (IPSPs) are generated. Activation of postsynaptic $GABA_B$ -receptors was also found to decrease the activity of Ca^{2+} channels, which inhibit dendritic Ca^{2+} -spike propagation (Perez-Garci *et al.* 2006).

The present state of knowledge about the plasma membrane part of $GABA_B$ -receptor signaling cascade in the brain may thus be described as a mutually interrelated regulatory network of $GABA_B$ -R, PTX-sensitive G-proteins of $G_i/G_o\alpha$ family, various AC isoforms and ionic channels such as $GABA_A$ -R (Xu and Wojcik 1986, Simonds 1999, Sunahara and Taussig 2002, Padgett and Schlesinger 2010, Pinard *et al.* 2010). Functionally, in this network, primary inhibitory signals proceeding at receptor level are followed by both positive and negative feedback regulatory loops tuning the whole regulatory circuit to an optimum output (Padgett and Schlesinger 2010, Pinard *et al.* 2010). These circuits are therefore highly complex and important for brain function as GABA represents the main inhibitory neurotransmitter of mammalian brain.

Our previous results indicated that the plasma membrane density of $GABA_B$ -R, determined by a saturation binding assay with antagonist [3H]CGP54626, was highest in 1-day-old animals and then it was dramatically decreased in 15- and 90-day-old rats (Kagan *et al.* 2012). Intrinsic efficacy of $GABA_B$ -receptors, measured as agonist-stimulated, high-affinity [^{35}S]GTP γ S binding, was also high at birth (PD1, PD2), however, it increased further during the first two weeks of postnatal life and reached the maximum between PD9 and PD15. In older rats, both baclofen- and SKF97541-stimulated [^{35}S]GTP γ S binding was decreased so that the level in adult rats (PD90) was not different from that in newborn animals.

The aim of our present work was to establish the structural correlate to these functional studies of $GABA_B$ -R ontogenesis by determination of PM density of $GABA_B$ -R1a, $GABA_B$ -R1b, $GABA_B$ -R2, $G_{i1}/G_{i2}\alpha$, $G_{i3}\alpha$, $G_{o1}\alpha$, $G_{o2}\alpha$ and $G\beta$ subunit proteins by quantitative immunoblotting with specific antibodies. We have also determined PTX-insensitive $G_{i2}\alpha$ protein as a test of maturation of intracellular "membrane traffic", as

vesicular transport within the neuron is an important part of optimum functioning of CNS. The general trend of brain cortex maturation was screened by analysis of prototypical plasma membrane marker, ouabain-dependent Na, K-ATPase (EC 3.6.1.3).

Material and Methods

The experiments were approved by Animal Care and Use Committee of the Institute of Physiology, Academy of Sciences of the Czech Republic to be in agreement with Animal Protection Law of the Czech Republic as well as European Community Council directives 86/609/EEC.

Chemicals and radiochemicals

GABA_B-receptor agonists baclofen (β -p-chlorophenyl-GABA), SKF 97541 [3-aminopropyl (methyl) phosphinic acid] and antagonist [³H]CGP 54626 (41.5 Ci/mmol, cat. no. R1088) were purchased from Tocris. [21, 22-³H]ouabain (30 mCi/mmol; NET211001) was from Perkin Elmer. The complete protease inhibitor cocktail was from Roche Diagnostic (cat. no. 1697498). All other chemicals were of highest quality available.

Primary antisera and antibodies

G_i1/G_i2 α , G_i3 α and G_o1/G_o2 α subunit proteins were identified by antipeptide antibodies prepared as described originally by Gierschik *et al.* (1986), Goldsmith *et al.* (1987), Backlund *et al.* (1988) and Milligan (1988, 1990). These antisera were previously characterized in our laboratory (Ihnatovych *et al.* 2002a). Polyclonal antibodies oriented against GABA_B-R1 (R-300, sc-14006), GABA_B-R2 (H-300, sc-28792), G β (T-20, sc-378) G₂ α (I-20, sc-388), G₁₂ α (S-20, sc-409) and α subunit of Na, K-ATPase (H-300, sc-28800) were from Santa Cruz.

Isolation of plasma membrane-enriched fraction from rat brain cortex

Rat brain cortex was minced with a razor blade on a pre-cooled plate and diluted in STEM medium containing 250 mM sucrose, 20 mM Tris-HCl, 3 mM MgCl₂, 1 mM EDTA, pH 7.6, fresh 1 mM PMSF plus protease inhibitor cocktail. It was then homogenized mildly in loosely-fitting Teflon-glass homogenizer for 5 min (2 g w. w. per 10 ml) and centrifuged for 5 min at 3500 rpm. Resulting post-nuclear supernatant (PNS) was filtered through Nylon nets of decreasing size (330, 110

and 75 mesh, Nitex) and applied on top of Percoll in Beckman Ti70 tubes (30 ml of 27.4 % Percoll in STEM medium). Centrifugation for 60 min at 30000 rpm (65000 x g) resulted in the separation of two clearly visible layers (Bourova *et al.* 2009). The upper layer represented plasma membrane fraction (PM); the lower layer contained mitochondria (MITO). The upper layer was removed, diluted 1:3 in STEM medium and centrifuged in Beckman Ti70 rotor for 90 min at 50000 rpm (175000 x g). Membrane sediment was removed from the compact, gel-like sediment of Percoll, re-homogenized by hand in a small volume of 50 mM Tris-HCl, 3 mM MgCl₂, 1 mM EDTA, pH 7.4 (TME medium), snap frozen in liquid nitrogen and stored at -80 °C.

SDS-PAGE and immunoblotting

Aliquots of PM were solubilised in NuPAGE SDS Sample Buffer (4x) with an addition of NuPAGE Sample Reducing Agent (10x) according to manufacturer's instructions. Samples were heated at 70 °C for 10 min, loaded at 10 μ g/well and resolved by NuPAGE 4-12 % or 10 % Bis-Tris polyacrylamide gels (10 wells, 1 mm thick) using 3-(N-morpholino) propane sulfonic acid (MOPS), sodium dodecyl sulfate (SDS) running buffer with NuPAGE Antioxidant prior to blotting on nitrocellulose membranes (Protran, Schleicher & Schuell). Molecular mass determinations were based on pre-stained molecular mass markers (Sigma, SDS 7B).

After SDS-PAGE, the proteins were transferred to nitrocellulose and blocked for 1 h at room temperature in 5 % (w/v) low-fat milk in TBS-Tween buffer [10 mM Tris-HCl, pH 8.0, 150 mM NaCl, 0.1 % (v/v) Tween 20]. Antibodies were added in TBS-Tween containing 1 % (w/v) low-fat milk and incubated for at least 2 h. The primary antibody was then removed and the blot washed extensively (3 x 10 min) in TBS-Tween. Secondary antibodies (donkey anti-rabbit IgG conjugated with horseradish peroxidase) were diluted in TBS-Tween containing 1 % (w/v) low-fat milk applied for 1 h, and after three 10-min washes the blots were developed by ECL technique using Super Signal West Dura (Pierce) as substrate. The developed blots were scanned with an imaging densitometer ScanJett 5370C (HP) and quantified by Aida Image Analyzer v. 3.28 (Ray test).

[³H]CGP54626 binding; one-point assay

Membranes (100 μ g protein per assay) were incubated with 12 nM [³H]CGP54626 in a final volume

of 100 µl of binding mix containing (A) 50 mM Tris-HCl (pH 7.4) alone, (B) 50 mM Tris-HCl (pH 7.4) plus 2.5 mM CaCl_2 or (C) 50 mM Tris-HCl (pH 7.4) plus 5 mM MgCl_2 for 60 min at 30 °C. The bound and free radioactivity was separated by filtration and determined by liquid scintillation as described. Non-specific binding was determined in the presence of 1 mM GABA.

Na, K-ATPase; [^3H]ouabain binding

Sodium plus potassium-activated, ouabain-dependent Na, K-ATPase (E.C. 3.6.1.3) was determined by "one-point" [^3H]ouabain binding assay according to Svoboda *et al.* (1988). Membranes (50 µg of protein) were incubated with 20 nM [^3H]ouabain in a total volume of 0.45 ml of 5 mM NaH_2PO_4 , 5 mM MgCl_2 , 50 mM Tris-HCl, pH 7.6 (Mg-Pi buffer) for 90 min at 30 °C. The bound and free radioactivity was separated by filtration through Whatman GF/B filters in Brandel cell harvester. Filters were washed 3× with 3 ml of ice-cold incubation buffer and placed in 4 ml of scintillation cocktail (CytoScint, ICN). Radioactivity remaining on filters was determined after 10 h at room temperature by liquid scintillation. Non-specific binding was determined in the presence of 1 µM unlabelled ouabain.

Statistical analysis

The significance of difference between the immunoblot signal determined in fetuses 1-day before the birth (100 %) and signals determined at different age intervals (PD1, PD2, PD5, PD9, PD10, PD15, PD25, PD35, PD42, PD47, PD90) was analyzed by one-way test of variance ANOVA followed by Bonferroni's *post-hoc* comparison test using GraphPadPrism4.

One-way ANOVA followed by Bonferroni's *post-hoc* comparison test was also used for statistical analysis of the difference of [^3H]CGP54626 and [^3H]ouabain binding to PM isolated from 1-, 15- and 90-day-old rats.

Protein determination

Lowry method was used for determination of membrane protein using bovine serum albumin (Sigma, Fraction V) as a standard. Data were calculated by fitting the calibration curve as a quadratic equation.

Results

Our previous results indicated an early functional maturation of GABA_B-R signaling cascade in

rat brain cortex (Kagan *et al.* 2012). Agonists baclofen and SKF97541 exhibited significant efficiency (both potency and efficacy) already at PD2 and the highest number of GABA_B-R, determined as maximum binding capacity (B_{max}) for specific antagonist [^3H]CGP54626, was determined in 1-day-old animals (PD1). In older rats, the number of [^3H]CGP54626 binding sites was decreased, in contrast to agonist-stimulated G-protein activity, which was increased during the first two weeks of postnatal life. The maximum of agonist-stimulated G-protein activity, measured as baclofen- or SKF97541-stimulated [^{35}S]GTPγS binding, was observed on PD14-15. Maximum of [^{35}S]GTPγS binding was followed by continuous decrease of G-protein activity till the adulthood (90-day-old rats).

Immunoblot analysis of plasma membrane density of GABA_B-R1a, GABA_B-R1b, GABA_B-R2 and of the cognate, PTX-sensitive G-proteins performed in this work (Fig. 1 and 2) indicated that expression level of GABA_B-R1a, GABA_B-R1b, GABA_B-R2 and of all individual members of G_i/G_o family (G_i1/G_i2α, G_i3α, G_oα, G_zα¹ and Gβ subunit proteins) was high already around the birth, i.e. in fetuses 1 day before the birth (D-1) and in 1- and 2-day-old rats (PD1 and PD2). Subsequently, membrane density of GABA_B-R1a, GABA_B-R1b and GABA_B-R2 was decreased more or less in parallel till PD15 (Fig. 1). At this age interval, the GABA_B-R subunits represented 55±15 % (GABA_B-R1a), 70±17 % (GABA_B-R1b) and 51±5 % (GABA_B-R2) of the level detected in newborn rats, 100 %. In early postnatal period (up to PD15), PM expression level of GABA_B-R1b was lower than of GABA_B-R1a.

By contrast, the membrane density of all G-proteins (G_i1/G_i2α, G_i3α, G_oα, G_zα, G_i2α¹ and Gβ) was unchanged in the course of the whole postnatal period, i.e. between PD2 and PD90 (Fig. 2). Expressed in more detail, the immunoblot signals of all G-proteins in PM samples containing the same amount of protein (10 µg) and prepared from fetuses 1 day before the birth and 1-, 2-, 5-, 9-, 10-, 15-, 25-, 35-, 42-, 47- and 90-day-old rats, were the same, i.e. not statistically different when compared with the control signal in fetuses 1 day before

¹ Though being insensitive to PTX and thus unrelated to GABA_B-R, the ontogenetic profile of G_i2α protein was also measured with the aim to obtain information about the important group of G-proteins regulating membrane traffic (Harhammer *et al.* 1994, 1996, Hildebrandt *et al.* 1997). The developmental change of these proteins was similar to that of other G-proteins. The prenatal level was high and afterwards, it decreased slowly and continuously till the adulthood.

the birth, 100 %. Thus, there was a clear disparity between development of receptor and G-proteins functionally participating in GABA_B-R signaling cascade: membrane density of GABA_B-R subunit proteins was substantially decreased between the birth and “opening of eyes” period, while the cognate, trimeric G-proteins of Gi/Go family were unchanged.

In the second part of our work, we have extended our recent results (Kagan *et al.* 2012) and compared antagonist [³H]CGP54626 binding in ion-free, 2.5 mM CaCl₂ and 5 mM MgCl₂ containing incubation media (Fig. 3) in PM isolated from 1-, 13- and 90-days old rats. The use of ion-free incubation medium was introduced by Ko *et al.* (2003) for determination of the number of μ -, δ - and κ -opioid receptors in monkey brain cortex and hypothalamus. Comparison of the level of [³H]CGP54626 binding in these media was performed by a “one-point assay” at the constant concentration of 15 nM of this radioligand.

The decrease of [³H]CGP54626 binding was noticed in all incubation media, however, due the low level of binding, this decrease was not significant in ion-free medium (Fig. 3). The highly significant decrease was measured in 2.5 mM CaCl₂ ($p < 0.001$) and 5 mM MgCl₂ ($p < 0.01$) containing media. Please note that the level of binding in 2.5 mM CaCl₂ was much higher that in 5 mM MgCl₂. This result reflects and may be interpreted as a natural consequence of the presence of 2.5 mM calcium in extracellular medium surrounding GABA_B-R ligand binding site located on GABA_B-R1 (Padgett and Slesinger 2010, Pinard *et al.* 2010) and is in agreement with the previous agonist binding studies of GABA_B-R in rat brain cortex synaptosomes (Bowery *et al.* 1983). The decrease of GABA_B-R1a, GABA_B-R1b and GABA_B-R2 subunits (Fig. 1) proceeded in parallel with the decrease of antagonist binding (Fig. 3). However, it was terminated at PD15, while antagonist binding was decreased further till the adulthood (PD90).

Postnatal development of GABA_B-R1, GABA_B-R2, G-proteins and ligand binding to GABA_B-R was substantially different from maturation of the prototypical plasma membrane marker, Na, K-ATPase (Fig. 4A,B). Membrane density of α -subunit of Na, K-ATPase was low at birth (PD1, PD2) and further development was reflected in a marked increase of this protein. The major increase occurred between the birth and PD25. Since this age interval, PM content of Na, K-ATPase was not significantly altered in PM isolated from 35-, 42- and

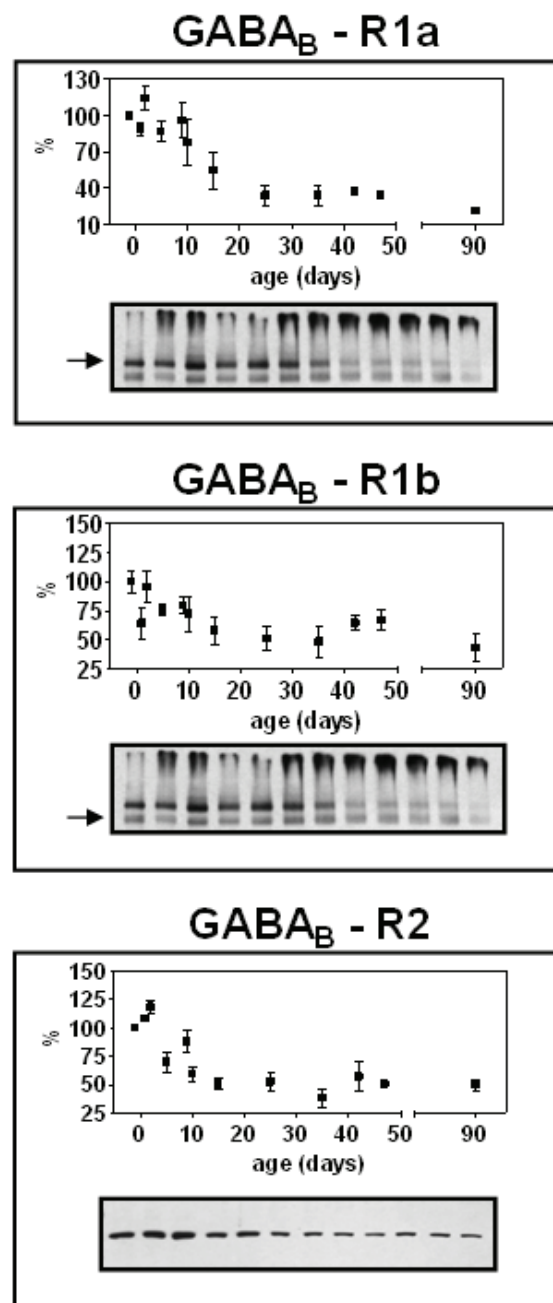


Fig. 1. Plasma membrane density of GABA_B-R1a, GABA_B-R1b, GABA_B-R2 subunit proteins; immunoblot analysis. PM proteins (10 μ g per well) were resolved by Invitrogen NuPAGE system in 4-12 % gradient gel and identified by immunoblotting with specific antibodies as described in Methods. Data represent the average of five immunoblots \pm SEM. Significance of the difference between the immunoblot signal determined in fetuses 1 day before the birth (D-1, 100 %) and signals determined at different ages (PD1, PD2, PD5, PD9, PD10, PD15, PD25, PD35, PD42, PD47, PD90) was analyzed by one-way ANOVA followed by Bonferroni's *post-hoc* comparison test using GraphPadPrism4. **GABA_B-R1a:** D-1 vs 15 (**, $P < 0.01$), PD2 vs PD15 (**, $P < 0.01$), PD2 vs PD90 (**, $P < 0.01$), PD15 vs PD90 (NS, $P > 0.05$). **GABA_B-R1b:** D-1 vs PD15 (NS, $P > 0.05$), PD2 vs PD15 (NS, $P > 0.05$), PD15 vs PD90 (NS, $P > 0.05$), D-1 vs PD90 (**, $P < 0.01$), PD2 vs PD90 (*, $P < 0.05$). **GABA_B-R2:** D-1 vs PD15 (*, $P < 0.05$), PD2 vs PD15 (**, $P < 0.01$), PD2 vs PD90 (**, $P < 0.01$), PD15 vs PD90 (NS, $P > 0.05$).

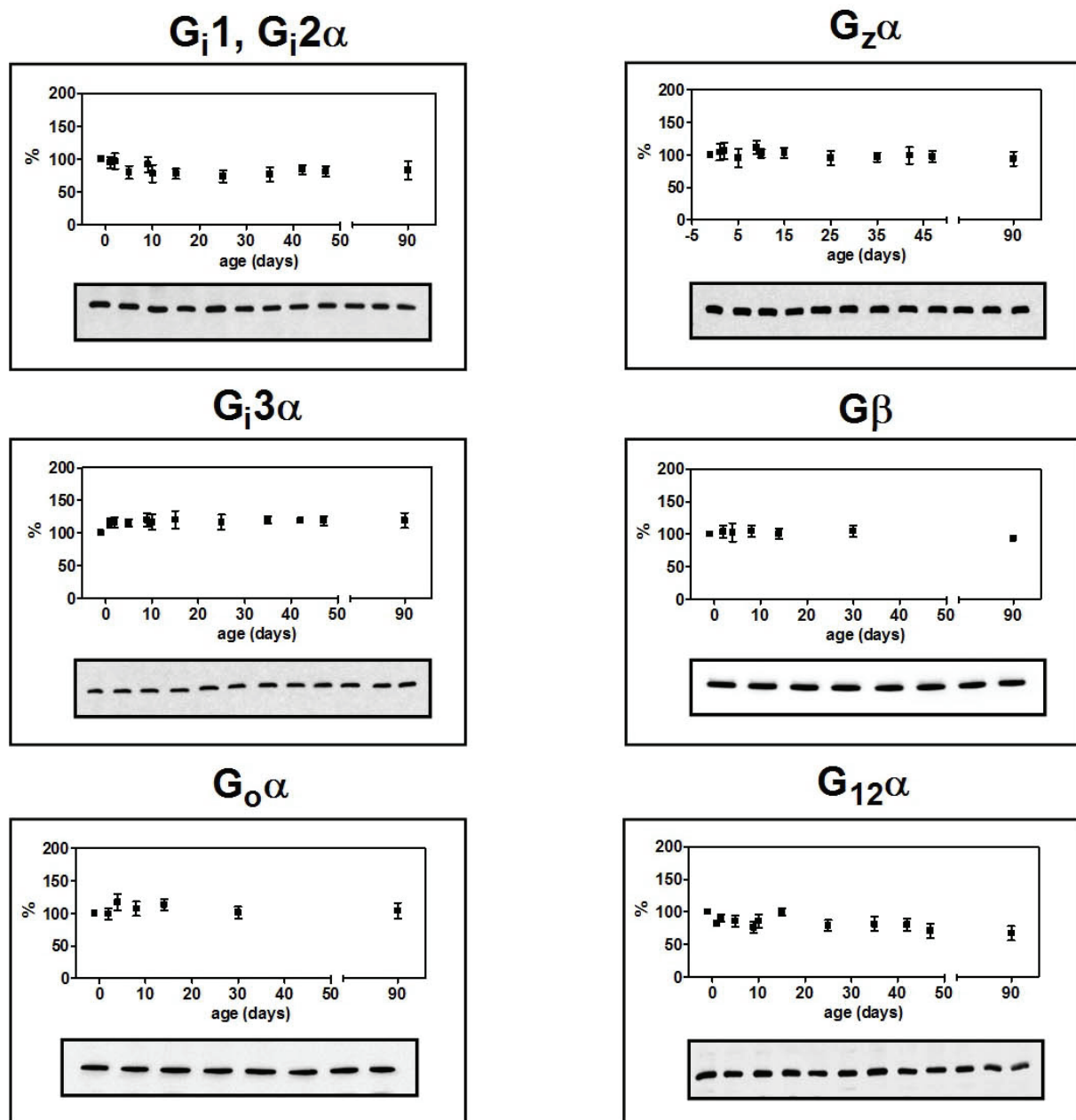


Fig. 2. Plasma membrane density of $G_{i1}/G_{i2\alpha}$, $G_{i3\alpha}$, $G_o\alpha$, $G_z\alpha$, $G\beta$ and $G_{12\alpha}$ subunit proteins; immunoblot analysis. The expression of G-proteins was analyzed in the same plasma membrane samples as those used for detection of $GABA_B$ -R subunits. G-proteins were unchanged in the course of the whole postnatal period as there was no significant difference between immunoblot signals detected around the birth (D-1, PD1, PD2) and at all other ages: $G_{i1}/G_{i2\alpha}$ ($p>0.05$); $G_{i3\alpha}$ ($p>0.05$), $G_o\alpha$ ($p>0.05$), $G_z\alpha$ ($p>0.05$) and $G\beta$ ($p>0.05$) at all ages. $G_{12\alpha}$ was decreased between PD1 and PD90 (*, $p<0.05$).

90-day-old rats. The intensity of average immunoblot signal in adult rats (PD90) was 3.5-times higher than around the birth (day -1, PD1 and PD2).

Virtually the same results were obtained when selective inhibitor [3H]ouabain was used for determination of Na, K-ATPase (Fig. 4C). The major increase of [3H]ouabain binding in PM was noticed between the birth and PD25. Since PD25, the binding of this radioligand was not significantly different from the

adult animals. [3H]ouabain binding in 90-day-old rats ($13.89 \text{ pmol.mg}^{-1}$) was 1.6x higher than in 15-day-old rats ($8.64 \text{ pmol.mg}^{-1}$) and 2.6x higher than in fetuses 1 day before the birth ($5.44 \text{ pmol.mg}^{-1}$). Thus, the overall maturation of brain cortex PM composition monitored by a developmental study of Na, K-ATPase molecules proceeds after the birth, while the level of $GABA_B$ -signaling proteins is high at birth and further decreased ($GABA_B$ -R) or unchanged (G-proteins).

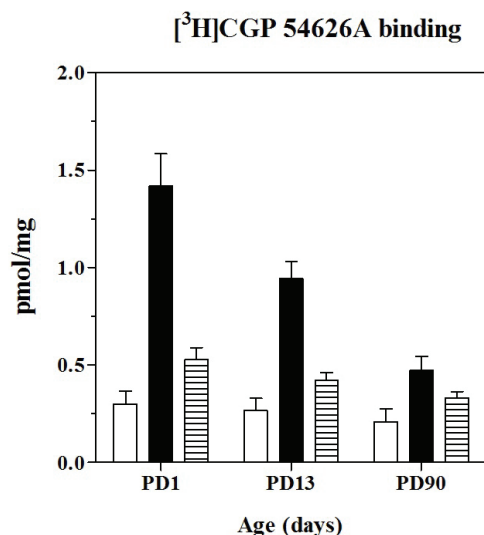


Fig. 3. Decrease of [³H]CGP54626A binding in the course of postnatal ontogenesis. PM (100 µg protein per assay) isolated from 1-(PD1), 13-(PD13) and 90-(PD90)-day-old rats were incubated with 12 nM [³H]CGP54626A in 50 mM Tris-HCl with no additions (□, open columns), in 50 mM Tris plus 2.5 mM CaCl₂ (■, full columns) or in 50 mM Tris-HCl plus 5 mM MgCl₂ (≡, hatched columns). Non-specific binding was determined in the presence of 1 mM GABA. Data represent the average of 3 binding assays performed in quadruplicates ± SEM. Comparison of binding data in PM isolated from PD1, PD13 and PD90 was performed by one-way ANOVA followed by Bonferroni's *post-hoc* comparison test. Open columns (□): PD1 versus PD13, NS, *p*>0.05; PD1 versus PD90, NS, *p*>0.05; PD13 versus PD90, NS, *p*>0.05. Full columns (■): PD1 versus PD13, **, *p*<0.01; PD1 versus PD90, ***, *p*<0.001; PD13 versus PD90, ***, *p*<0.001. Hatched columns (≡): PD1 versus PD13, NS, *p*>0.05; PD1 versus PD90, **, *p*<0.01; PD13 versus PD90, NS, *p*>0.05.

Discussion

In the brain, GABA_B-R-initiated signal transfer to G-proteins and from G-proteins to adenylyl cyclase (AC) represents a rather intricate trans-membrane process (Bormann 1988, Boege *et al.* 1991, Padgett and Slesinger 2010) because all its pivotal components occur in multiple isoforms with distinct functional properties, and the cognate G-proteins of G_i/G_o family exert both stimulatory and inhibitory effects on the overall AC activity, which represents the final outcome of the ten different isoenzymes, ACI-X (Backlund *et al.* 1988, Tang *et al.* 1992, Taussig *et al.* 1994, Simonds 1999, Sunahara and Taussig 2002). Our previous analysis of postnatal development of adenylyl cyclase in various brain areas indicated a marked activation of this enzyme in membranes prepared from 12-15-day-old rats (Ihnatovych *et al.* 2002b). The activity of the basal-, manganese-, fluoride-, GTP- and forskolin-stimulated AC was low at birth (PD1), increased sharply during the first two weeks of postnatal life, reached a maximum between

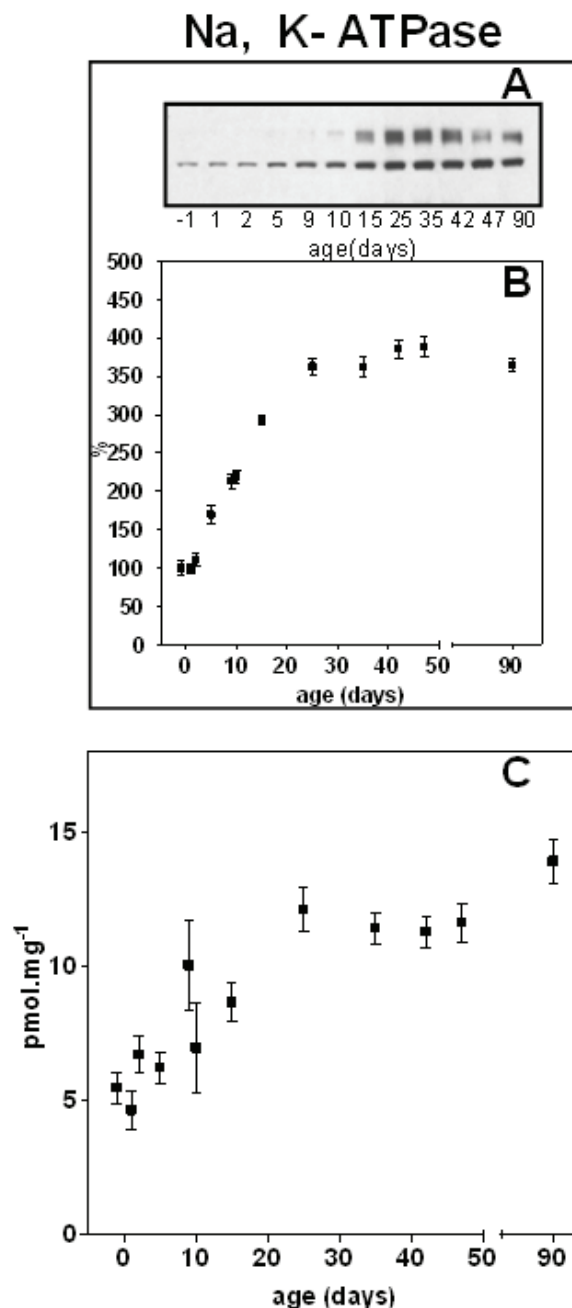


Fig. 4. Plasma membrane density of Na, K-ATPase; immunoblot analysis and [³H]ouabain binding. Immunoblot detection of α-subunit of Na, K-ATPase was performed by polyclonal Ab (Santa Cruz, sc-28800). (A) Typical immunoblot. (B) Average of 5 immunoblots. The significance of the difference between the immunoblot signal determined in fetuses 1 day before the birth (100 %) and signals determined at different ages (PD1, PD2, PD5, PD9, PD10, PD15, PD25, PD35, PD42, PD47, PD90) was analyzed by one-way ANOVA followed by Bonferroni's test using GraphPadPrism 4. Since PD5, the increase of Na,K-ATPase was highly significant (**, *p*<0.01). (C) [³H]ouabain binding was measured as described in Methods. Data represent the average ± SEM of three experiments performed in triplicates. Significance of the difference between the binding at different age intervals was analyzed by one-way ANOVA followed by Bonferroni's test: fetuses D-1 versus PD15 (*, *p*<0.05), D-1 versus PD25 (**, *p*<0.01), D-1 versus PD90 (**, *p*<0.01), PD15 versus PD25 (*, *p*<0.05), PD15 versus PD90 (**, *p*<0.01), PD25 versus PD90 (NS, *p*>0.05).

P12 and PD15 and then decreased to the level in 18-day-old rats. The maximum AC activities were roughly 4-times higher than those at birth. In older rats, AC activities were decreased further so that the level in adult animals (PD90) was about the same as that at birth (PD1). These results had also shown that there was a marked difference between the development of AC enzyme activity and protein content of individual AC isoforms. The immunoblot analysis indicated no significant change of ACI, but a continuous increase of ACII, IV and VI from PD1 to PD18. Since this age, membrane density of ACI, II, IV and VI was unchanged until the adulthood.

When considering other effectors of GABA_B-R but AC, presynaptic inhibition of voltage-gated Ca²⁺ channels (Ca_v) by GABA_B-R agonists has to be primarily considered (Dunlap and Fishbach 1981, Robertson and Taylor 1986, Dolphin 1990, 1991, Santos *et al.* 1995). Presynaptic inhibition of Ca_v by GABA_B-R agonists was demonstrated at early stages of postnatal development in rat somatosensory cortex at PD7 (Fukuda *et al.* 1993) and in hippocampus at PD6 (DiScenna *et al.* 1994). Postsynaptic GABA_B-receptors were found to be functioning in the cerebral cortex of rats only at postnatal day 17, i.e. 10 days later than presynaptic ones (Fukuda *et al.* 1993). It may be therefore suggested that the significant efficacy of baclofen and SKF97541 when activating G-proteins in newborn rat brain cortex (Kagan *et al.* 2012) is physiologically related to presynaptic inhibition of Ca_v channels mediated by G_o family of G-proteins. In accordance with this suggestion, PM density of G_oα and Gβ proteins was high already at PD1 and PD2 (Fig. 2).

G-protein regulated, inwardly rectifying potassium channels (GIRKs) represent another plausible candidate for interpretation of our data besides AC and voltage-gated Ca²⁺ channels (Ca_v). Activation of the GABA_B-R increases membrane conductance for potassium and reduces neuronal excitability by direct activation of the GIRK channels *via* free Gβγ subunits released from trimeric G-protein complex (Misgeld *et al.* 1995, Watts *et al.* 1996). The GABA_B-receptor was shown to be primarily K⁺-linked in the hippocampus (Gahwiler and Brown 1985). GIRK channel activation by G_{i/o}-coupled GPCR results in hyperpolarization of the neuron and inhibition of neuronal activity (Dascal 1997). In this way, similarly to the GABA_B-Ca_v currents, the GABA_B-GIRK currents are considered as inhibitory ones. In similarity with GABA_B-R expression patterns, the

GABA_B-GIRK currents have been identified in many brain regions including hippocampus, thalamus and cerebellum (Gahwiler and Brown 1985, Watts *et al.* 1996).

Functional characterization of individual GABA_B-R subunits in heterologous expression systems revealed a remarkable property of GABA_B-receptors: GABA_B-R1/GABA_B-R2 subunits must be co-expressed to form a functional GABA_B-receptor dimer; when expressed individually, the subunits failed to form physiologically normal receptors (Jones *et al.* 1998, Couve *et al.* 1998, Kaupmann *et al.* 1998, Kuner *et al.* 1999, Galvez *et al.* 2001, Padgett and Slesinger 2010). It has been also discovered that the GABA_B-R1 subunit contains an endoplasmic reticulum (ER) retention signal, which prevents forward trafficking of this receptor subunit (Margeta-Mitrovic *et al.* 2000). Dimerization of GABA_B-R1 with the GABA_B-R2 shields ER retention signal and permits surface expression of both GABA_B-R1 and GABA_B-R2. Yeast two-hybrid analysis revealed that the C-terminus of GABA_B-R1 and GABA_B-R2 was an important pre-requisite for heterodimerization of these subunits (White *et al.* 1998). CD spectroscopic analysis of a 30 amino acid sequence in C-termini of these proteins revealed a coiled-coil domain between the GABA_B-R1 and GABA_B-R2, which was required for the subunit-specific formation of the functional receptor dimer (Kammerer *et al.* 1999). Interestingly, the C-terminus of GABA_B-R2 subunit also regulates lateral diffusion of the receptor in hippocampal neurons suggesting that it helps to control receptor expression levels at the plasma membrane (Pooler and McIlhinney 2007).

In this work, the postnatal development of GABA_B-R1a, GABA_B-R1b and GABA_B-R2 was studied in plasma membranes isolated from brain cortex of rats of different ages by Western blotting. PM density of GABA_B-R1a, GABA_B-R1b and GABA_B-R2 was determined in parallel with trimeric Gα- and Gβ-subunits. Antagonist [³H]CGP54626 binding was measured in the same membrane samples. Subsequently, data collected on GABA_B-R were compared with the ontogenetic profile of prototypical plasma membrane marker Na, K-ATPase, which was used as an indicator of general brain development.

The detailed immunoblot analysis clearly showed that PM density of all GABA_B-R subunits was high at the birth (in fetuses D-1, PD1 and PD2) and subsequently it was largely decreased till PD15 (Fig. 1).

The GABA_B-R subunits in PM isolated from 15-days-old rats represented 55 % (GABA_B-R1a), 70 % (GABA_B-R1b) and 51 % (GABA_B-R2) of the level in newborn rats (100 %), respectively. The postnatal decrease of GABA_B-R1b subunit was relatively smaller when compared with GABA_B-R1a and GABA_B-R2. The decrease of GABA_B-R1a, GABA_B-R1b and GABA_B-R2 was accompanied by a decrease in the number of antagonist [³H]CGP54626 binding sites, which was demonstrated in the presence of both calcium (2.5 mM CaCl₂) and magnesium (5 mM MgCl₂) ions. The ion-free buffer, which has been successfully used in μ -, δ - and κ -opioid receptor binding assays (Ko *et al.* 2003), was inappropriate for radioligand binding assays of GABA_B-R.

In accordance with our data, the high levels of GABA_B-R1a in synaptic membranes isolated from brain cortex were also detected in the first postnatal days by Malitschek *et al.* (1998) and Fritschy *et al.* (1999) and these high levels of GABA_B-R1a were subsequently decreased till the adulthood. Both authors also described the different expression pattern for GABA_B-R1a and GABA_B-R1b isoforms. GABA_B-R1b was less abundant at birth than GABA_B-R1a, slightly increasing at postnatal days 10-14 and then decreasing till adulthood. Marked increase (3x) of PM density of Na, K-ATPase molecules was fully consistent with developmental study of Na, K-ATPase activity indicating manifold increase (5x) in membranes prepared by sucrose-density gradient centrifugation from the whole rat brain (Samson and Quinn 1967).

Our data thus indicated that the functional maturation of GABA_B-R signaling pathway is not finished at birth, in spite of the fact that these receptors are expressed in high amount (Fig. 1) and exhibit considerable ability to activate G-proteins with maximum of baclofen-stimulated [³⁵S]GTP γ S binding at PD14-15 (Kagan *et al.* 2012). Increase of [³⁵S]GTP γ S binding between the birth and PD14-15 was followed by a decrease in 18-day-old rats and further decrease till the adulthood (PD90). Accordingly, the peak value of [³H]GABA binding was detected at PD14 in rat brain cortical slices by quantitative autoradiography and this high level of [³H]GABA binding subsequently declined to the adult level (Turgeon and Albin 1994).

Contrarily, membrane density of all members of Gi/Go family of G-proteins was unchanged in the course of the whole postnatal development. The explanation why the “average” G-protein level in PM is unchanged in spite of the major change of G-protein function characterized

by the peak level of baclofen- or SKF97541-stimulated [³⁵S]GTP γ S binding at PD14-15 (Kagan *et al.* 2011), is unknown at present. It may be related to signaling *via* other effectors than AC (Ca_v and GIRKs); it may also reflect the fact that the data collected in mixture of all PM fragments do not reveal heterogeneities of protein composition in different PM compartments denominated as membrane domains/rafts (Moffett *et al.* 2000, Becher *et al.* 2001, 2004).

Conclusions

Our data indicate that the full complement of GABA_B-receptor protein molecules and cognate G-proteins exists in rat brain cortex already at birth. Functional maturation of GABA_B-R cascade in the course of the first two weeks of postnatal life was associated with a parallel decrease of plasma membrane density of GABA_B-R1a (55 \pm 15 %) and GABA_B-R2 (51 \pm 5 %) subunits; G_{i1}/G_{i2} α , G_{i3} α , G_o α , G_z α , G₁₂ α and G β , GABA_B-R1b proteins were unchanged. Decrease of GABA_B-R subunits proceeded together with the decrease of antagonist [³H]CGP54626 binding measured in ion-free, 2.5 mM CaCl₂ or 5 mM MgCl₂. The age interval between PD1 and PD14-15 represents the critical period for structural as well as functional maturation of GABA_B-R signaling cascade in rat brain cortex plasma membranes.

Conflict of Interest

There is no conflict of interest.

Acknowledgements

This work was supported by the GACR (P207/12/0919 and P304/12/G069) and by the Academy of Sciences of the Czech Republic (RVO: 67985823).

Abbreviations

Baclofen, β -p-chlorophenyl-GABA; Ca_v, voltage-dependent calcium channels; GABA, γ -aminobutyric acid; GABA_B-R, metabotropic receptor for GABA; GIRKs, inwardly rectifying potassium channels; GPCR, G-protein-coupled receptor; G-proteins, heterotrimeric guanine nucleotide-binding regulatory proteins; G_s α , G-protein stimulating adenylyl cyclase activity; G_i/G_o α , G-proteins inhibiting adenylyl cyclase activity in pertussis-toxin sensitive manner; G_q/G₁₁ α , G-proteins stimulating phospholipase C in pertussis-toxin independent manner; [³⁵S]GTP γ S, guanosine-5'-[γ -³⁵S]

triphosphate; PD, postnatal day; P_i, inorganic phosphate; PMSF, phenylmethylsulfonyl fluoride; PTX, pertussis toxin; SKF 97541, aminopropyl (methyl) phosphinic acid; w.w., wet weight.

References

- ASANO T, KAMIYA N, MORISHITA R, KATO K: Immunoassay for the beta gamma subunits of GTP-binding proteins and their regional distribution in bovine brain. *J Biochem* **103**: 950-953, 1988.
- BACKLUND PS, AKSAMIT RR, UNSON CG, GOLDSMITH P, SPIEGEL AM, MILLIGAN G: Immunochemical and electrophoretic characterization of the major pertussis toxin substrate of the RAW264 macrophage cell line. *Biochemistry* **27**: 2040-2046, 1988.
- BARRAL J, TORO S, GALARRAGA E, BARGAS J: GABAergic presynaptic inhibition of rat neostriatal afferents is mediated by Q-type Ca(2+) channels. *Neurosci Lett* **283**: 33-36, 2000.
- BECHER A, GREEN A, IGE AO, WISE A, WHITE JH, McILHINNEY RA: Ectopically expressed gamma-aminobutyric acid receptor B is functionally down-regulated in isolated lipid raft-enriched membranes. *Biochem Biophys Res Commun* **321**: 981-987, 2004.
- BECHER A, WHITE JH, McILHINNEY RAJ: The gamma-aminobutyric acid receptor B, but not the metabotropic glutamate receptor type-1, associates with lipid rafts in the rat cerebellum. *J Neurochem* **79**: 787-795, 2001.
- BOEGE F, NEUMANN E, HELMREICH EJ: Structural heterogeneity of membrane receptors and GTP-binding proteins and its functional consequences for signal transduction. *Eur J Biochem* **199**: 1-15, 1991.
- BORMANN J: Electrophysiology of GABAA and GABAB receptor subtypes. *Trends Neurosci* **11**: 112-116, 1988.
- BOUROVA L, STOHR J, LISY V, RUDAJEV V, NOVOTNY J, SVOBODA P: Isolation of plasma membrane compartments from rat brain cortex; detection of agonist-stimulated G protein activity. *Med Sci Monit* **15**: BR111-BR122, 2009.
- BOWERY NG, HILL DR, HUDSON AL: Characteristics of GABA B receptor binding sites on rat whole brain synaptic membranes. *Br J Pharmacol* **78**: 191-206, 1983.
- BOWERY NG, HILL DR, HUDSON AL: [3H](-)Baclofen: an improved ligand for GABAB sites. *Neuropharmacology* **24**: 207-210, 1985.
- BOWERY NG, HUDSON AL, PRICE GW: GABA_A and GABA_B receptor site distribution in the rat central nervous system. *Neuroscience* **20**: 365-383, 1987.
- BRAY P, CARTER A, SIMONS C, GUO V, PUCKETT C, KAMHOLZ J, SPIEGEL A, NIRENBERG M: Human cDNA clones for four species of G alpha s signal transduction protein. *Proc Natl Acad Sci USA* **83**: 8893-8897, 1986.
- BUSSIÈRES N, EL MANIRA A: GABA(B) receptor activation inhibits N- and P/Q-type calcium channels in cultured lamprey sensory neurons. *Brain Res* **847**: 175-185, 1999.
- CHEN G, VAN DEN POL AN: Presynaptic GABAB autoreceptor modulation of P/Q-type calcium channels and GABA release in rat suprachiasmatic nucleus neurons. *J Neurosci* **18**: 1913-1922, 1998.
- COUVE A, FILIPPOV AK, CONNOLLY CN, BETTLER B, BROWN DA, MOSS SJ: Intracellular retention of recombinant GABAB receptors. *J Biol Chem* **273**: 26361-26367, 1998.
- DASCAL N: Signaling via the G protein-activated K⁺ channels. *Cell Signal* **9**: 551-573, 1997.
- DISCENNA PG, NOWICKY AV, TEYLER TJ: The development of GABAB-mediated activity in the rat dentate gyrus. *Brain Res Dev Brain Res* **77**: 295-298, 1994.
- DOLPHIN AC: G protein modulation of calcium currents in neurons. *Annu Rev Physiol* **52**: 243-255, 1990.
- DOLPHIN AC: Regulation of calcium channel activity by GTP binding proteins and second messengers. *Biochim Biophys Acta* **1091**: 68-80, 1991.
- DUNLAP K, FISCHBACH GD: Neurotransmitters decrease the calcium conductance activated by depolarization of embryonic chick sensory neurones. *J Physiol* **317**: 519-535, 1981.

- FERNÁNDEZ-ALACID L, AGUADO C, CIRUELA F, MARTÍN R, COLÓN J, CABAÑERO MJ, GASSMANN M, WATANABE M, SHIGEMOTO R, WICKMAN K, BETTLER B, SÁNCHEZ-PRIETO J, LUJÁN R: Subcellular compartment-specific molecular diversity of pre- and post-synaptic GABA-activated GIRK channels in Purkinje cells. *J Neurochem* **110**: 1363-1376, 2009.
- FRITSCHY J-M, MESKENAITE V, WEINMANN O, HONER M, BENKE D, MOHLER H: GABA_B-receptor splice variants GB1a and GB1b in rat brain: developmental regulation, cellular distribution and extrasynaptic localization. *Eur J Neurosci* **11**: 761-768, 1999.
- FUKUDA A, MODY I, PRINCE DA: Differential ontogenesis of presynaptic and postsynaptic GABA_B inhibition in rat somatosensory cortex. *J Neurophysiol* **70**: 448-452, 1993.
- GÄHWILER BH, BROWN DA: GABA_B-receptor-activated K⁺ current in voltage-clamped CA3 pyramidal cells in hippocampal cultures. *Proc Natl Acad Sci USA* **82**: 1558-1562, 1985.
- GALVEZ T, DUTHEY B, KNIAZEFF J, BLAHOS J, ROVELLI G, BETTLER B, PREZEAU L, PIN J-P: Allosteric interactions between GB1 and GB2 subunits are required for optimal GABA_B receptor function. *EMBO J* **20**: 2152-2159, 2001.
- GERHARDT MA, NEUBIG RR: Multiple Gi protein subtypes regulate a single effector mechanism. *Mol Pharmacol* **40**: 707-711, 1991.
- GIERSCHIK P, MILLIGAN G, PINES M, GOLDSMITH P, CODINA J, KLEE W, SPIEGEL A: Use of specific antibodies to quantitate the guanine nucleotide-binding protein Go in brain. *Proc Natl Acad Sci USA* **83**: 2258-2262, 1986.
- GOLDSMITH P, BACKLUND PSJ, ROSSITER K, CARTER A, MILLIGAN G, UNSON CG, SPIEGEL A: Purification of heterotrimeric GTP-binding proteins from brain: identification of a novel form of Go. *Biochemistry* **27**: 7085-7090, 1988.
- GOLDSMITH P, GIERSCHIK P, MILLIGAN G, UNSON CG, VINITSKY R, MALECH HL, SPIEGEL AM: Antibodies directed against synthetic peptides distinguish between GTP-binding proteins in neutrophil and brain. *J Biol Chem* **262**: 14683-14688, 1987.
- GUDERMANN T, SCHÖNEBERG T, SCHULTZ G: Functional and structural complexity of signal transduction via G-protein-coupled receptors. *Annu Rev Neurosci* **20**: 399-427, 1997.
- HARHAMMER R, NÜRNBERG B, HARTENECK C, LEOPOLDT D, EXNER T, SCHULTZ G: Distinct biochemical properties of the native members of the G12 G-protein subfamily. Characterization of G alpha 12 purified from rat brain. *Biochem J* **319**: 165-171, 1996.
- HARHAMMER R, NÜRNBERG B, SPICHER K, SCHULTZ G: Purification of the G-protein G13 from rat brain membranes. *Biochem J* **303**: 135-140, 1994.
- HILDEBRANDT JD: Role of subunit diversity in signaling by heterotrimeric G proteins. *Biochem Pharmacol* **54**: 325-339, 1997.
- HILL DR, BOWERY NG: 3H-baclofen and 3H-GABA bind to bicuculline-insensitive GABA_B sites in rat brain. *Nature* **290**: 149-152, 1981.
- IHNATOVYCH I, NOVOTNY J, HAUGVICOVA R, BOUROVA L, MARES P, SVOBODA P: Opposing changes of trimeric G protein levels during ontogenetic development of rat brain. *Brain Res Dev Brain Res* **133**: 57-67, 2002a.
- IHNATOVYCH I, NOVOTNY J, HAUGVICOVA R, BOUROVA L, MARES P, SVOBODA P: Ontogenetic development of G protein-mediated adenylyl cyclase signaling in rat brain. *Brain Res Dev Brain Res* **133**: 69-75, 2002b.
- JONES KA, BOROWSKY B, TAMM JA, DOUGLAS AC, DURKIN MM, DAI M, YAO WJ, JOHNSON M, GUNWALDSEN C, HUANG LY, TANG C, SHEN Q, SALON JA, MORSE K, LAZ T, SMITH KE, NAGARATHNAM D, NOBLE SA, BRANCHEK TA, GERALD C: GABA_B receptors function as a heteromeric assembly of the subunits GABA_B R1 and GABA_B R2. *Nature* **396**: 674-678, 1998.
- KAGAN D, DLOUHA K, ROUBALOVA L, SVOBODA P: Ontogenetic development of GABA(B)-receptor signaling cascade in plasma membranes isolated from rat brain cortex; the number of GABA(B)-receptors is high already shortly after the birth. *Physiol Res* **61**: 629-635, 2012.

- KAMMERER RA, FRANK S, SCHULTHESS T, LANDWEHR R, LUSTIG A, ENGEL J: Heterodimerization of a functional GABAB receptor is mediated by parallel coiled-coil alpha-helices. *Biochemistry* **38**: 13263-13269, 1999.
- KAUPMANN K, MALITSCHKE B, SCHULER V, HEID J, FROESTL W, BECK P, MOSBACHER J, BISCHOFF S, KULIK A, SHIGEMOTO R, KARSCHIN A, BETTLER B: GABAB-receptor subtypes assemble into functional heteromeric complexes. *Nature* **396**: 683-687, 1998.
- KERR DI, ONG J: GABA_B receptors. *Pharmacol Ther* **67**: 187-246, 1995.
- KO MC, LEE H, HARRISON C, CLARK MJ, SONG HF, NAUGHTON NN, WOODS JH, TRAYNOR JR: Studies of mu-, kappa-, and delta-opioid receptor density and G protein activation in the cortex and thalamus of monkeys. *J Pharmacol Exp Ther* **306**: 179-186, 2003.
- KUNER R, KÖHR G, GRÜNEWALD S, EISENHARDT G, BACH A, KORNAU HC: Role of heteromer formation in GABAB receptor function. *Science* **283**: 74-77, 1999.
- LADERA C, DEL CARMEN GODINO M, JOSÉ CABAÑERO M, TORRES M, WATANABE M, LUJÁN R, SÁNCHEZ-PRIETO J: Pre-synaptic GABA receptors inhibit glutamate release through GIRK channels in rat cerebral cortex. *J Neurochem* **107**: 1506-1517, 2008.
- MALITSCHKE B, RÜEGG D, HEID J, KAUPMANN K, BITTIGER H, FRÖSTL W, BETTLER B, KUHN R: Developmental changes of agonist affinity at GABA_BR1 receptor variants in rat brain. *Mol Cell Neurosci* **12**: 56-64, 1998.
- MARGETA-MITROVIC M, JAN YN, JAN LY: A trafficking checkpoint controls GABA (B) receptor heterodimerization. *Neuron* **27**: 97-106, 2000.
- MILLIGAN G: Techniques used in the identification and analysis of function of pertussis toxin-sensitive guanine nucleotide binding proteins. *Biochem J* **255**: 1-13, 1988.
- MILLIGAN G: Immunological probes and the identification of guanine nucleotide-binding proteins. In: *G Proteins as Mediators of Cellular Signaling Processes*. HOUSLAY MD, MILLIGAN G (eds), John Wiley & Sons. Ltd., New York, 1990, pp 31-46.
- MILLIGAN G: Regional distribution and quantitative measurement of the phosphoinositidase C-linked guanine nucleotide binding proteins G11 alpha and Gq alpha in rat brain. *J Neurochem* **61**: 845-851, 1993.
- MISGELD U, BIJAK M, JAROLIMEK W: A physiological role for GABAB receptors and the effects of baclofen in the mammalian central nervous system. *Prog Neurobiol* **46**: 423-462, 1995.
- MOFFETT S, BROWN DA, LINDER ME: Lipid-dependent targeting of G proteins into rafts. *J Biol Chem* **275**: 2191-2198, 2000.
- MUMBY S, PANG IH, GILMAN AG, STERNWEIS PC: Chromatographic resolution and immunologic identification of the alpha 40 and alpha 41 subunits of guanine nucleotide-binding regulatory proteins from bovine brain. *J Biol Chem* **263**: 2020-2026, 1988.
- PADGETT CL, SLESINGER PA: GABA_B receptor coupling to G-proteins and ion channels. *Adv Pharmacol* **58**: 123-147, 2010.
- PÉREZ-GARCÍA E, GASSMANN M, BETTLER B, LARKUM ME: The GABAB1b isoform mediates long-lasting inhibition of dendritic Ca²⁺ spikes in layer 5 somatosensory pyramidal neurons. *Neuron* **50**: 603-616, 2006.
- PINARD A, SEDDIK R, BETTLER B: GABA_B receptors: physiological functions and mechanisms of diversity. *Adv Pharmacol* **58**: 231-255, 2010.
- POOLER AM, McILHINNEY RA: Lateral diffusion of the GABA_B receptor is regulated by the GABA_{B2} C terminus. *J Biol Chem* **282**: 25349-25356, 2007.
- RAYMOND JR: Multiple mechanisms of receptor-G protein signaling specificity. *Am J Physiol* **269**: F141-F158, 1995.
- ROBERTSON B, TAYLOR WR: Effects of gamma-aminobutyric acid and (-)-baclofen on calcium and potassium currents in cat dorsal root ganglion neurones in vitro. *Br J Pharmacol* **89**: 661-672, 1986.
- SAKABA T, NEHER E: Direct modulation of synaptic vesicle priming by GABA(B) receptor activation at a glutamatergic synapse. *Nature* **424**: 775-778, 2003.
- SAMSON FE, QUINN DJ: Na⁺-K⁺-activated ATPase in rat brain development. *J Neurochem* **14**: 421-427, 1976.

- SANTOS AE, CARVALHO CM, MACEDO TA, CARVALHO AP: Regulation of intracellular [Ca²⁺] and GABA release by presynaptic GABAB receptors in rat cerebrocortical synaptosomes. *Neurochem Int* **27**: 397-406, 1995.
- SIMONDS WF: G protein regulation of adenylate cyclase. *Trends Pharmacol Sci* **20**: 66-73, 1999.
- SUNAHARA RK, TAUSSIG R: Isoforms of mammalian adenylyl cyclase: multiplicities of signaling. *Mol Interv* **2**: 168-184, 2002.
- SVOBODA P, AMLER E, TEISINGER J: Different sensitivity of ATP +Mg+Na (I) and Pi+Mg (II) dependent types of ouabain binding to phospholipase A2. *J Membr Biol* **104**: 211-221, 1988.
- TANG WJ, IÑIGUEZ-LLUHI JA, MUMBY S, GILMAN AG: Regulation of mammalian adenylyl cyclases by G-protein alpha and beta gamma subunits. *Cold Spring Harb Symp Quant Biol* **57**: 135-144, 1992.
- TAUSSIG R, TANG WJ, HEPLER JR, GILMAN AG: Distinct patterns of bidirectional regulation of mammalian adenylyl cyclases. *J Biol Chem* **269**: 6093-6100, 1994.
- TURGEON SM, ALBIN RL: Postnatal ontogeny of GABA_B binding in rat brain. *Neuroscience* **62**: 601-613, 1994.
- UJCIKOVA H, DLOUHA K, ROUBALOVA L, VOSAHLIKOVA M, KAGAN D, SVOBODA P: Up-regulation of adenylyl cyclases I and II induced by long-term adaptation of rats to morphine fades away 20 days after morphine withdrawal. *Biochim Biophys Acta* **1810**: 1220-1229, 2011.
- WATTS AE, WILLIAMS JT, HENDERSON G: Baclofen inhibition of the hyperpolarization-activated cation current, I_h, in rat substantia nigra zona compacta neurons may be secondary to potassium current activation. *J Neurophysiol* **76**: 2262-2270, 1996.
- WHITE JH, WISE A, MAIN MJ, GREEN A, FRASER NJ, DISNEY GH, BARNES AA, EMSON P, FOORD SM, MARSHALL FH: Heterodimerization is required for the formation of a functional GABA(B) receptor. *Nature* **396**: 679-682, 1998.
- XU J, WOJCIK WJ: Gamma aminobutyric acid B receptor-mediated inhibition of adenylate cyclase in cultured cerebellar granule cells: blockade by islet-activating protein. *J Pharmacol Exp Ther* **239**: 568-573, 1986.