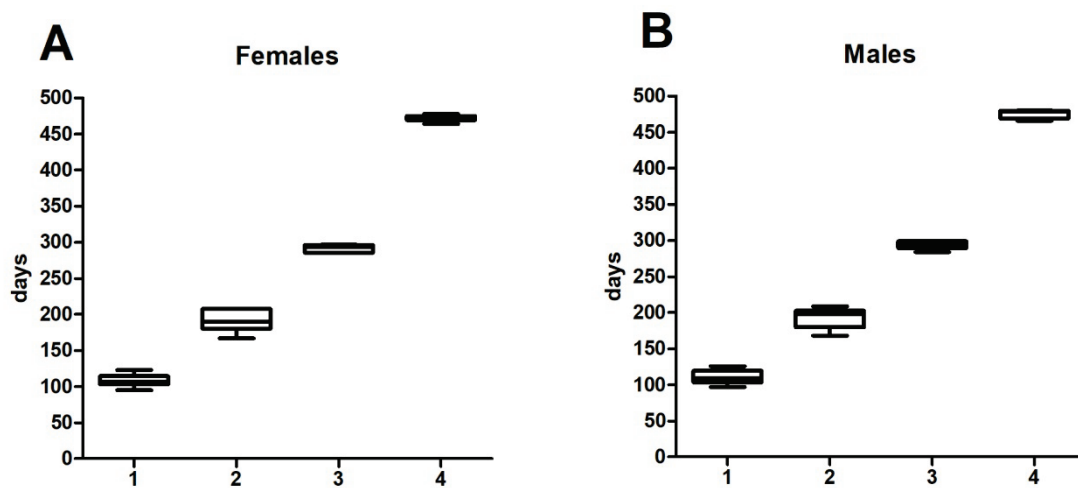


Supplementary Fig. S3. Correlations between weight and salivary (A) TBARS – thiobarbituric acid reactive substances, (B) GSH/GSSG – ratio of oxidized/reduced glutathione, (C) TAC – total antioxidant capacity, (D) FRAP – ferric reducing antioxidant power.



Supplementary Fig. S4. Box and whiskers plots of the four age groups of (A) female and (B) male mice included in the experiment.