

Signs of myelin impairment in cerebrospinal fluid after osmotic opening of the blood-brain barrier in rats

Kozler, P., ¹, Sobek, O. ², Pokorný J., ¹

¹ Institute of Physiology, First Faculty of Medicine, Charles University in Prague

² Laboratory for CSF and Neuroimmunology, Topelex Ltd., Prague

Corresponding author:

Professor Jaroslav Pokorny, M.D., DSc.

Institute of Physiology

First Faculty of Medicine

Charles University

Albertov5, 128 00 Prague2

Czech Republic

pokorny@lf1.cuni.cz

Short title: CSF MBP damage

Summary

A number of clinical neurological pathologies are associated with increased permeability of the blood brain barrier (BBB). Induced changes of the homeostatic mechanisms in the brain microenvironment lead among others to cellular changes in the CNS. The question was whether some of these changes can be induced by osmotic opening of BBB in an *in vivo* experiment and whether they can be detected in cerebrospinal fluid (CSF). CSF was taken via the suboccipital puncture from 10 healthy rats and six rats after the osmotic opening of the BBB. In all 16 animals, concentration of myelin basic protein (MBP ng/ml), Neuron-specific enolase (NSE ng/ml) and TAU-protein (Tau pg/ml) were determined in CSF by ELISA. Values in both groups were statistically evaluated. Significant difference between the control and experimental group was revealed only for the concentration of myelin basic protein ($p < 0.01$). The presented results indicate that osmotic opening of the BBB in vivo experiment without the presence of other pathological conditions of the brain leads to a damage of myelin, without impairment of neurons or their axons.

Key words: myelin basic protein – cerebrospinal fluid (CSF) – CSF sampling - blood-brain barrier (BBB) - osmotic BBB disruption

Introduction

A number of clinical neurological pathologies are associated with increased permeability of the blood brain barrier (BBB). Induced changes of the homeostatic mechanisms in the brain microenvironment lead to cellular changes in the CNS. They are manifested, among others, by signs of structural degradation of myelin (Pokorný *et al.* 2002)

Although myelin basic protein (MBP) also occurs in the peripheral nervous system, it is present mainly in the CNS. His main role is structural. It interacts with lipids of plasma membranes of oligodendrocytes in order to build and maintain the integrity of the

multilayered myelin sheet during the process of myelination in CNS. Its expression is age related and continues from childhood to adulthood.

MBP determines adaptive processes of internal environment to CNS disorders, it is responsible for myelin integrity and it has also other functions. It participates in the transmission of extracellular signals to oligodendrocytes via membrane proteins (e.g. acetin, tubulin), to which it binds. If MBP function in these physiological processes fails, a structural lesion of myelin can develop. Such lesions are accompanied by changes of MBP concentration in CSF (Davies *et al.* 1987, Boggs 2006, Kalwa and Smith 1994, Deber and Reynolds 1991, Simons and Trotter 2007). Also in several other clinical pathologies MBP is a useful marker of impaired internal environment of the brain. In the clinic and in appropriate experimental models in vivo the determination of the concentration of MBP in CSF enables to estimate the degree of impairment of physiological functions. MBP level is estimated primarily in such disorders as multiple sclerosis (MS), cerebral ischemia (stroke), brain injury (traumatic brain injury- TBI) and certain brain tumors. All of these entities are associated with different degrees of increased permeability of the blood brain barrier (BBB). (Engelhardt and Liebner 2014). CSF marker for neuronal damage is neuron-specific enolase (NSE) and the marker for axonal lesion is tau protein (Tau).

The aim of the present study was to determine whether the increased permeability of the BBB itself without the presence of other pathological conditions, may lead to changes in the concentration of CSF markers of structural lesions of the CNS. Vzhledem k výsledkům naší předchozí práce, která prokázala strukturální změny myelinu již za jednu hodinu, zvolili jsme časný odběr likvoru i v této práci (Kozler *et al.* 2010). For this purpose we used the method of osmotic opening of the BBB in experiments on rats. (Rapoport 1970, Kroll and Neuwelt 1998, Kozler and Pokorny 2003).

Material and Methods

Adult male Wistar strain laboratory rats (weight 390-410 g) were used in our experiments. All experiments were approved by the Ethical Committee of the First Faculty of Medicine (Charles University in Prague) and were in agreement with the Guidelines of the Animal Protection Law of the Czech Republic and Guidelines for the treatment of laboratory animals EU Guidelines 86/609/EEC.

Osmotic opening of the BBB

Microsurgical exposure of the internal carotid (ACI):

Animals were put into the state of general anaesthesia using intraperitoneal application of thiopental in the dose of 4 mg/100 g and allowed to ventilate spontaneously throughout the procedure. Starting from a skin incision along the midline between the upper end of the sternum and the mandible, the whole common carotid artery (ACC, arteria carotis communis) was exposed with a standard microsurgical technique and, beyond its bifurcation, also the proximal portions of the ACI and external carotid (ACE, arteria carotis externa), which was ligated close beyond the bifurcation. An intraluminal catheter was introduced into the ACC trunk from the arteriotomy for selective application of mannitol. With the application over and the catheter removed, the ACC was ligated distal to and proximal to the arteriotomy. The operation concluded with a single-layer suture (Kozler and Pokorný 2003).

Osmotic opening of the BBB:

Mannitol 20% (1 098 mosmol/l) in a dose of 5 ml/kg was selectively applied in the ACI at a rate of 0.12 ml/sec (Rapoport 2000). After the surgical intervention, animals were placed in boxes offering standard access to food and drink.

CSF sampling

CSF in amount of 0.15 to 0.2 ml was extracted from cisterna magna by suboccipital puncture in ten healthy rats and six rats after osmotic opening of the BBB. CSF in the experimental

group was taken in time intervals from 95 to 200 minutes after completion of mannitol administration (see Tab. 1).

Table 1. Characteristics of experimental and control group

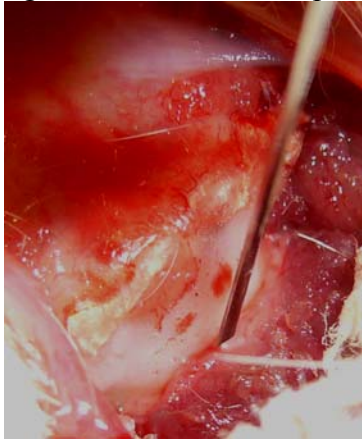
| | number | body weight in grams | time interval between BBB opening and CSF sampling in minutes |
|--------------------|--------|----------------------|---|
| control group | 10 | 278-298 Ø 287,9 | |
| experimental group | 6 | 270-295 Ø 286,3 | 95-200 Ø157 |

Animals were put into the state of general anaesthesia using intraperitoneal application of thiopental in the dose of 4 mg/100 g and allowed to ventilate spontaneously throughout the procedure. During the procedure, animal was fixed in the three-point fixation device of a stereotaxic apparatus (see Fig. 1). Skin was cut at the cervicocranial transition, fascia intersected, nuchal muscles were separated subperiostally, and atlantooccipital membrane explored. Puncture (1.5 mm deep) was performed with a needle attached to a glass syringe fixed at the vertical arm of stereotaxic apparatus at appoint 3 mm laterally from the midline to the left (see Fig. 2). CSF was taken by syringe aspiration. After CSF sampling, the surgical pathway to atlantooccipital membrane was closed in one layer and animal was kept in a tempered boxing until resolution from general anaesthesia. Method of CSF sampling via suboccipital puncture use also other authors (Nirogi *et al.* 2009, Lai *et al.* 1983, van den Berg *et al.* 2002). However, in our modification, CSF was sampled from a small surgical approach with visualization of atlantooccipital membrane. In animals of average weight 400 g (we used in experiments) the total amount of CSF was 0.6 ml with 0.2 ml in the cisterna magna (Rosenling 2008). This means that we took almost the maximum possible amount of CSF obtainable from cisterna magna.

Fig. 1: Animal's position in stereotaxic apparatus



Fig. 2: Place of suboccipital puncture



CSF analysis

In all 16 animals, concentration of myelin basic protein in CSF was determined (MBP ng/ml) by MBP Elisa BECKMAN together with the neuron specific enolase (NSE ng / ml Method: Elecsys NSE Roche) and the protein Tau (Tau pg/ml, Elisa Total Tau EUROIMMUN).

Statistics

Values of MBP, NSE and Tau protein in both Gross of animals were statistically evaluated using Kruskal-Wallis and Mann-Whitney non-parametric tests.

Results

Concentrations of individual markers in CFS measured in ten control animals and six animals after the BBB opening is given in Tab 2.

Tab. 2 CSF composition (average values \pm standard deviation)

| | | Mean \pm SD | | |
|--------------|--------|--------------------|-------------------|-------------|
| | number | MBP | NSE | Tau |
| controls | 10 | 7,119 \pm 5,376 | 0,606 \pm 0,418 | not present |
| experimental | 6 | 14,847 \pm 0,258 | 0,942 \pm 0,425 | not present |

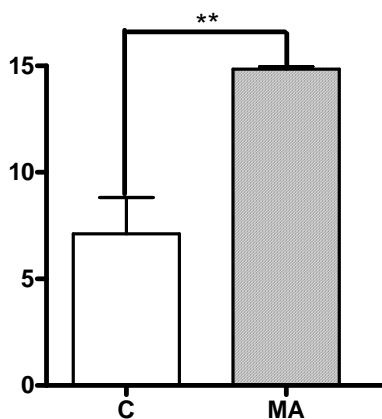
The results show that MBP levels in the control group averaged 7.1 ng/l and they had large variability (standard deviation 5.3). Average MBP levels in the experimental group were 14.8 ng/l with very small variability (standard deviation 0.25) ($p < 0,01$) (Fig. 3).

In humans, the normal MBP levels in CSF are reported to be ≤ 4 ng/ml; higher values (4-8 ng/ml) indicate a chronic myelin lesion and values above 9 ng/ml suggest acute damage to myelin (Greene *et al.* 2012). In rats, the concentration of MBP in CSF appears to be several times higher. (Rosenling 2008). The above given values result from the adequate sample dilution recommended by the manufacturer of the laboratory kit (Rosenling 2008).

Contrary to that, NSE concentration in the experimental group remained practically unchanged compared to the control group and Tau protein was not detectable in either group.

Fig. 3: Myelin basic protein concentration in CSF

(control (C) and mannitol administered (MA) rats, concentration of MBP is given in ng/l, ** = $p < 0,01$)



Discussion

Isolation of MBP from the myelin membrane and determination of the sequence of the individual amino acids were accomplished in 1971 (Eylar *et al.* 1971). In the early '80s the method for determining the concentration of MBP in CSF was developed (Delassalle *et al.* 1980). During the next years, increased CSF MBP concentrations in multiple sclerosis (MS), stroke, head injury and brain tumors were reported (Mukherjee *et al.* 1985; Davies *et al.* 1987; Barry *et al.* 1991). Current concept of the pathogenesis of demyelination in multiple sclerosis (MS) is based primarily on results from experimental studies (experimental allergic encephalomyelitis - EAE). It is assumed that the specific autoimmune disease can impair myelin by antigen specific autoreactive T cells (Giovannoni 2006). Experimental models of cerebral ischemia *in vivo* have demonstrated the separation of myelin from the swelling axons. Histopathological evaluation demonstrated an early relative loss of myelin protein immunoreactivity (McIver *et al.* 2010). Liu and co-workers showed that some isoforms of MBP were degraded in cases of experimental injury *in vivo* (controlled cortical impact in a rat model of TBI). Other *in vitro* studies have found that MBP is sensitive to calpain, which can cause MBP fragmentation characteristic for TBI (Liu *et al.* 2006).

Elevated concentrations of MBP levels in CSF in cases of oligodendroglial brain tumors (oligodendrogliomas and mixed oligoastrocytomas) are known and they were explained by finding that oligodendrocytes express large amounts of the genes responsible for encoding myelin proteins. MBP thus serves as a molecular biomarker of those tumors (Golfinos *et al.* 1997).

In all the above clinical conditions of demyelination, an increased permeability of the BBB is always demonstrated.

In an experimental model of multiple sclerosis (experimental autoimmune encephalomyelitis - EAE), an increased number of leukocytes in the perivascular space stimulates secretion of

matrix metalloproteases (MMP-2 and MMP-9), which degrade extracellular matrix with resulting increased permeability of the BBB (Liebner and Engelhardt 2014). In experimental models of cerebral ischemia *in vivo*, permeability disorder has been recently attributed to the dysfunction of newly discovered signalling protein Sonic hedgehog (SHH) (named after the hero of the computer game Sonic the Hedgehog), which occurs during ischemia in higher concentrations and destroys anchoring proteins occludin and laminin (Alvarez *et al.* 2011). In cases of brain tumors the increased permeability of the BBB can be explained by the neovascularization in the growing tumor, with a sharp increase of the expression of vascular endothelial growth factor (VEGF). In brain injury cases the increased permeability of the BBB has a mechanical origin (Engelhardt and Liebner 2014).

In all above pathogenetic categories, an increased BBB permeability is explained by the phenomena which are manifestations of the particular pathological process itself. In our study, the sign of myelin degradation (increased MBP in CSF) appears to be a direct consequence of merely BBB opening without the presence of any other pathological process (significantly higher concentrations of CSF MBP rats in the experimental group compared to healthy animals in the control group ($p < 0.01$). Induced impairment of brain homeostatic leads to significant structural changes in this functionally important protein of CNS.

Concentrations of NSE, an enzyme produced by normal neurons (Tapia *et al.* 1981) were not influenced by the BBB osmotic opening. The tau protein which is responsible for axonal microtubule stabilization was not detectable in either group (Huton and Roder 2007). These results indicate that BBB osmotic opening does not affect the structural integrity of neurons and axons.

Disintegration of myelin after osmotic opening of the BBB was proved already in our previous study (Kozler *et al.* 2010). We do not have yet any explanation for myelin impairment and for the increased MBP concentration in CSF after only BBB osmotic opening

and we found no acceptable explanation in the literature. Increased expression of genes for transcription of the protein, as it is in oligodendroglial tumors, can be certainly excluded. Similarly, the calpain induced degradation of myelin after the mechanical insult is not very likely. Immunoreactivity changes of myelin proteins detectable in the ischemic lesions or effect of yet unidentified antigen-specific substances, which may resemble the damage to myelin in MS cannot be excluded, but their participation in the process of demyelination after the osmotic opening of the BBB is considered only as hypothetical.

Conflict of Interest

There is no conflict of interest

Acknowledgements

Supported by grant P – 34/LF 1/7

References

- ALVAREZ JI, DODELET-DEVILLERS A, KEBIR H, IFERGAN I, FABRE PJ, TEROUZ S, SABBAGH M, WOSIK K, BOURBONNIÈRE L, BERNARD M, VAN HORSSSEN J, DE VRIES HE, CHARRON F, PRAT A.: The Hedgehog pathway promotes blood-brain barrier integrity and CNS immune quiescence. *Science* **23**: 1727-31, 2011
- BARRY R, PAYTON M, GROOME N.: Characterization of myelin basic protein catabolism products in the cerebrospinal fluid from multiple sclerosis, stroke and head injury patients. *Neurochem Int* **18**: 291-300, 1991
- BOGGS JM: Myelin basic protein: a multifunctional protein. *Cell Mol Life Sci* **63**: 1945-61, 2006
- DAVIES L, MCLEOD JG, MUIR A, HENSLEY WJ: Diagnostic value of cerebrospinal fluid myelin basic protein in patients with neurological illness. *Clin Exp Neurol* **24**: 5-10, 1987
- DEBER CM, REYNOLDS SJ.: Central nervous system myelin: structure, function, and pathology. *Clin Biochem* **24**: 113-34, 1991
- DELASSALLE A, JACQUE C, DROUET J, RAOUL M, LEGRAND JC, CESSÉLIN F.: Radioimmunoassay of the myelin basic protein in biological fluids, conditions improving sensitivity and specificity. *Biochimie* **62**: 159-65, 1980
- ENGELHARDT B, LIEBNER S.: Novel insights into the development and maintenance of the blood-brain barrier. *Cell Tissue Res* **355**: 687-99, 2014
- EYLAR EH, BROSTOFF S, HASHIM G, CACCAM J, BURNETT P.: Basic A1 protein of the myelin membrane. The complete amino acid sequence. *J Biol Chem* **25**: 5770-84, 1971

GIOVANNONI G.: Multiple sclerosis cerebrospinal fluid biomarkers. *Dis Markers* **22**: 187-96 2006

GOLFINOS JG, NORMAN SA, COONS SW, NORMAN RA, BALLECEER C, SCHECK AC.: Expression of the genes encoding myelin basic protein and proteolipid protein in human malignant gliomas. *Clin Cancer Res* **3**: 799-804, 1997

GREENE DN, SCHMIDT RL, WILSON AR, FREEDMAN MS, GRENACHE DG.: Cerebrospinal fluid myelin basic protein is frequently ordered but has little value: a test utilization study. *Am J Clin Pathol* **138**: 262-72, 2012

KALWY SA, SMITH R.: Mechanisms of myelin basic protein and proteolipid protein targeting in oligodendrocytes (review). *Mol Membr Biol* **11**: 67-78, 1994

KOZLER P, POKORNÝ J: Altered blood-brain barrier permeability and its effect on the distribution of Evans blue and sodium fluorescein in the rat brain applied by intracarotid injection. *Physiol Res* **52**: 607-614, 2003

KOZLER P, RILJAK V, POKORNÝ J.: Time-dependent axonal impairment in experimental model of brain oedema. *Neuro Endocrinol Lett* 2010 **31**: 477-82, 2010

KROLL RA, NEUWELT EA : Outwitting the blood-brain barrier for therapeutic purposes : Osmotic opening and other means. *Neurosurgery* **42**: 1083-1100, 1998

LAI YL, SMITH PM, LAMM WJ, HILDEBRANDT J.: Sampling and analysis of cerebrospinal fluid for chronic studies in awake rats. *J Appl Physiol Respir Environ Exerc Physiol* **54**: 1754-7, 1983

LIU MC, AKLE V, ZHENG W, KITLEN J, O'STEEN B, LARNER SF, DAVE JR, TORTELLA FC, HAYES RL, WANG KK.: Extensive degradation of myelin basic protein isoforms by calpain following traumatic brain injury. *J Neurochem* **98**: 700-12, 2006

MCIVER SR, MUCCIGROSSO M, GONZALES ER, LEE JM, ROBERTS MS, SANDS MS, GOLDBERG MP.: Oligodendrocyte degeneration and recovery after focal cerebral ischemia. *Neuroscience* **169**: 1364-75, 2010

MUKHERJEE A, VOGT RF, LINTHICUM DS: Measurement of myelin basic protein by radioimmunoassay in closed head trauma, multiple sclerosis and other neurological diseases. *Clin Biochem* **18**: 304-7, 1985

NIROGI R, KANDIKERE V, MUDIGONDA K, BHYRAPUNENI G, MUDDANA N, SARALAYA R, BENADE V.: A simple and rapid method to collect the cerebrospinal fluid of rats and its application for the assessment of drug penetration into the central nervous system.

POKORNÝ J, KOZLER P, TROJAN S: Nervous tissue internal environment and blood-brain barrier and their part in the processes of reparative neuroplasticity. (in Czech) *Čes Slov Neurol Neurochir* 65/98: 307-312, 2002.

RAPOPORT SI: Effect of concentrated solutions on blood-brain barrier. *Am J Physiol* **219**: 270-274, 1970

RAPOPORT SI: Osmotic opening of the blood-brain barrier: principles, mechanism, and therapeutic applications. *Cell Moll Neurobiol* **20**: 217-230, 2000

RODER HM, HUTTON ML.: Microtubule-associated protein tau as a therapeutic target in neurodegenerative disease. *Expert Opin Ther Targets* **11**: 435-42, 2007

ROSENLING T.: Proteomic screening of cerebrospinal fluid: Candidate proteomic biomarkers for sample stability and experimental autoimmune encephalomyelitis. 2008 https://www.tipharma.com/fileadmin/user_upload/Theses/PDF/Therese_Rosenling_D4-102.pdf

SIMONS M, TROTTER J.: Wrapping it up: the cell biology of myelination. *Curr Opin Neurobiol* **17**: 533-40, 2007

TAPIA FJ, POLAK JM, BARBOSA AJ, BLOOM SR, MARANGOS PJ, DERMODY C, PEARSE AG.: Neuron-specific enolase is produced by neuroendocrine tumours.

Lancet **11**: 808-11, 1981

VAN DEN BERG MP, ROMEIJN SG, VERHOEF JC, MERKUS FW.: Serial cerebrospinal fluid sampling in a rat model to study drug uptake from the nasal cavity. *J Neurosci Methods* **30**: 99-107, 2002