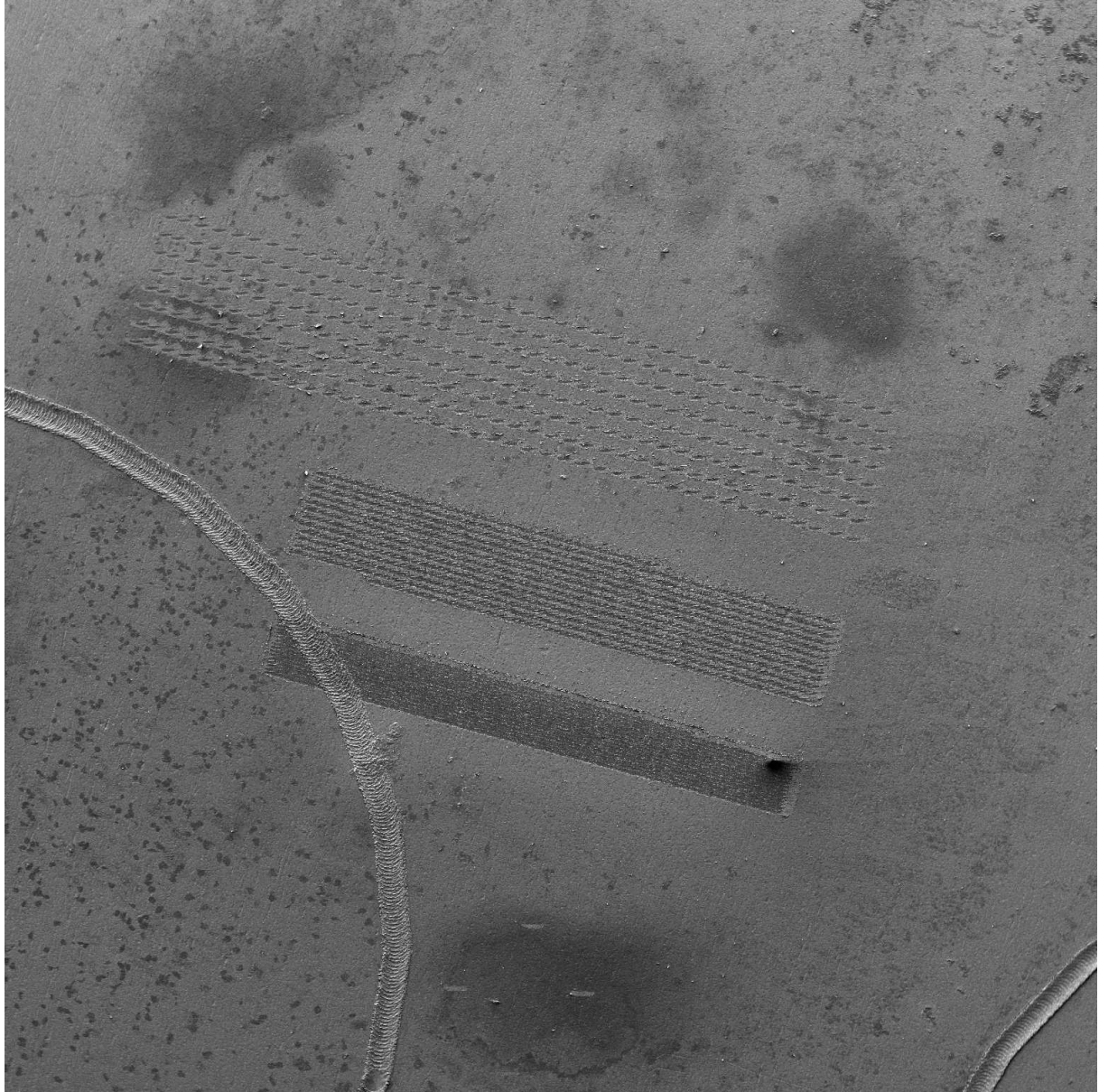


Fig: Naldi\_130527\_01.tif,



SEM HV: 5.00 kV  
View field: 2.89 mm  
SEM MAG: 150 x

WD: 16.72 mm  
Det: SE  
Date(m/d/y): 05/27/13

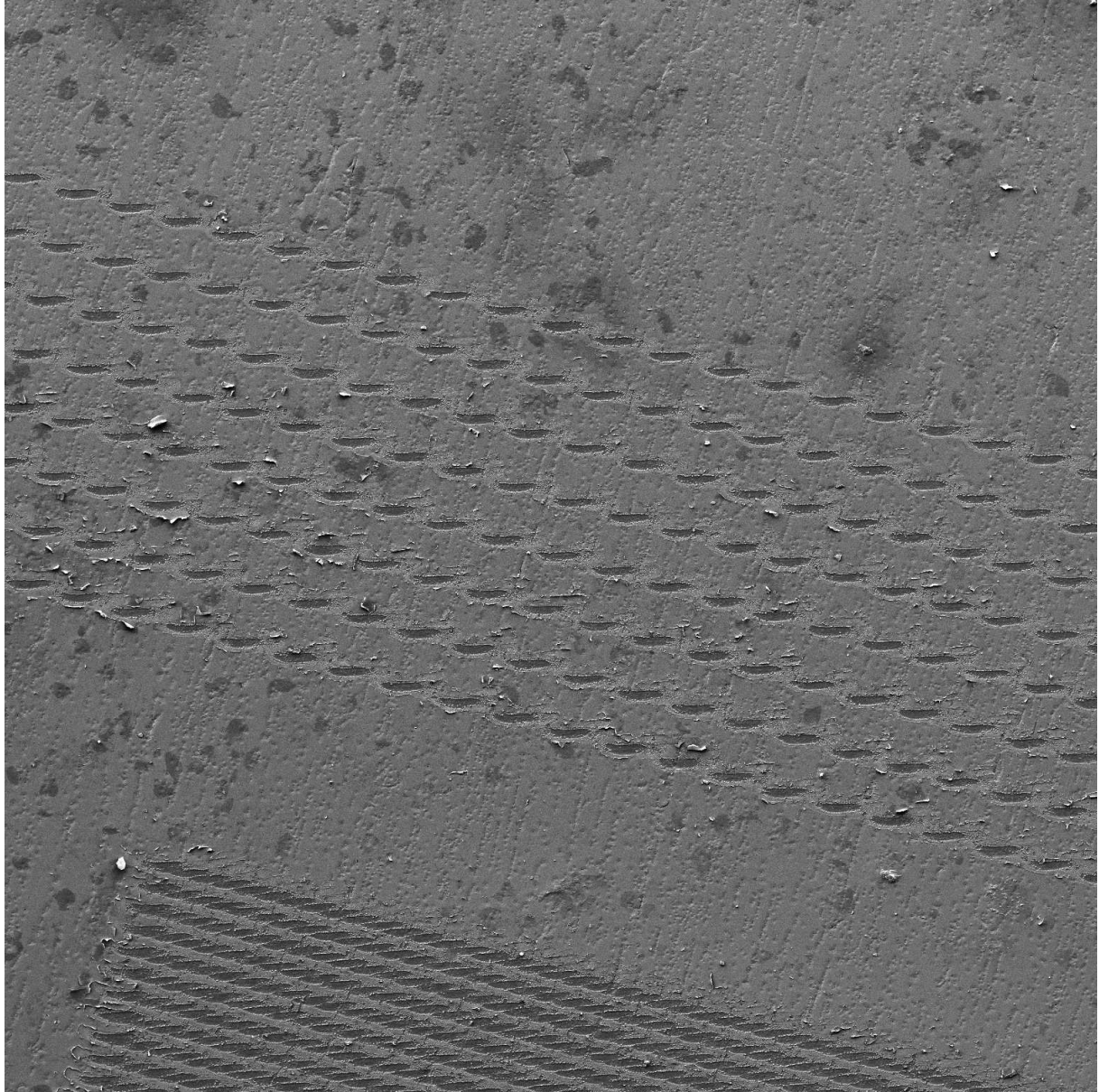
500  $\mu$ m

VEGA\\ TESCAN

Performance in nanospace



Fig: Naldi\_130527\_02.tif,



SEM HV: 5.00 kV  
View field: 963.0  $\mu\text{m}$   
SEM MAG: 450 x

WD: 16.57 mm  
Det: SE  
Date(m/d/y): 05/27/13

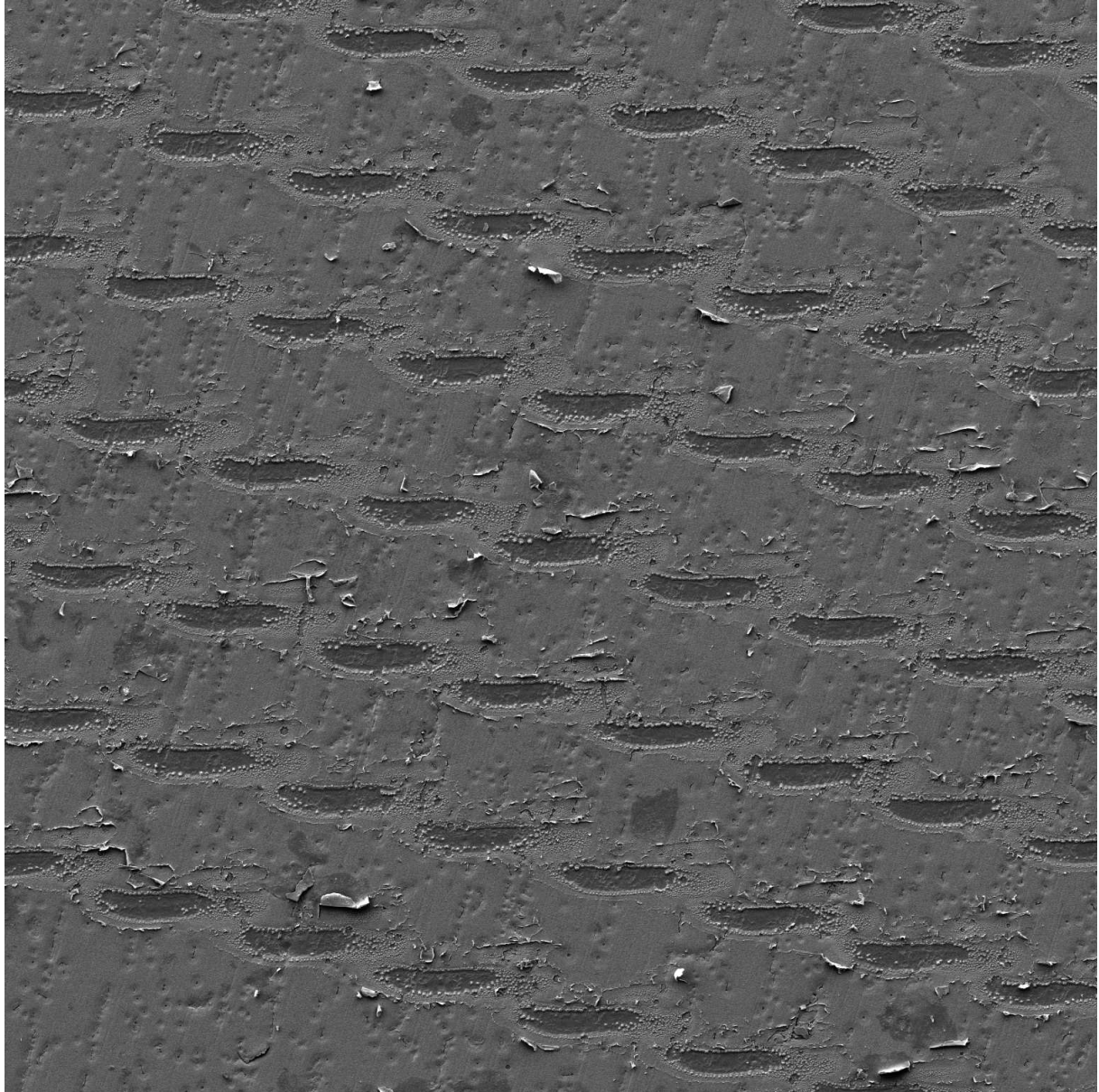
200  $\mu\text{m}$

VEGA\\ TESCAN

Performance in nanospace



Fig: Naldi\_130527\_03.tif,



SEM HV: 5.00 kV  
View field: 361.1  $\mu\text{m}$   
SEM MAG: 1.20 kx

WD: 16.61 mm  
Det: SE  
Date(m/d/y): 05/27/13

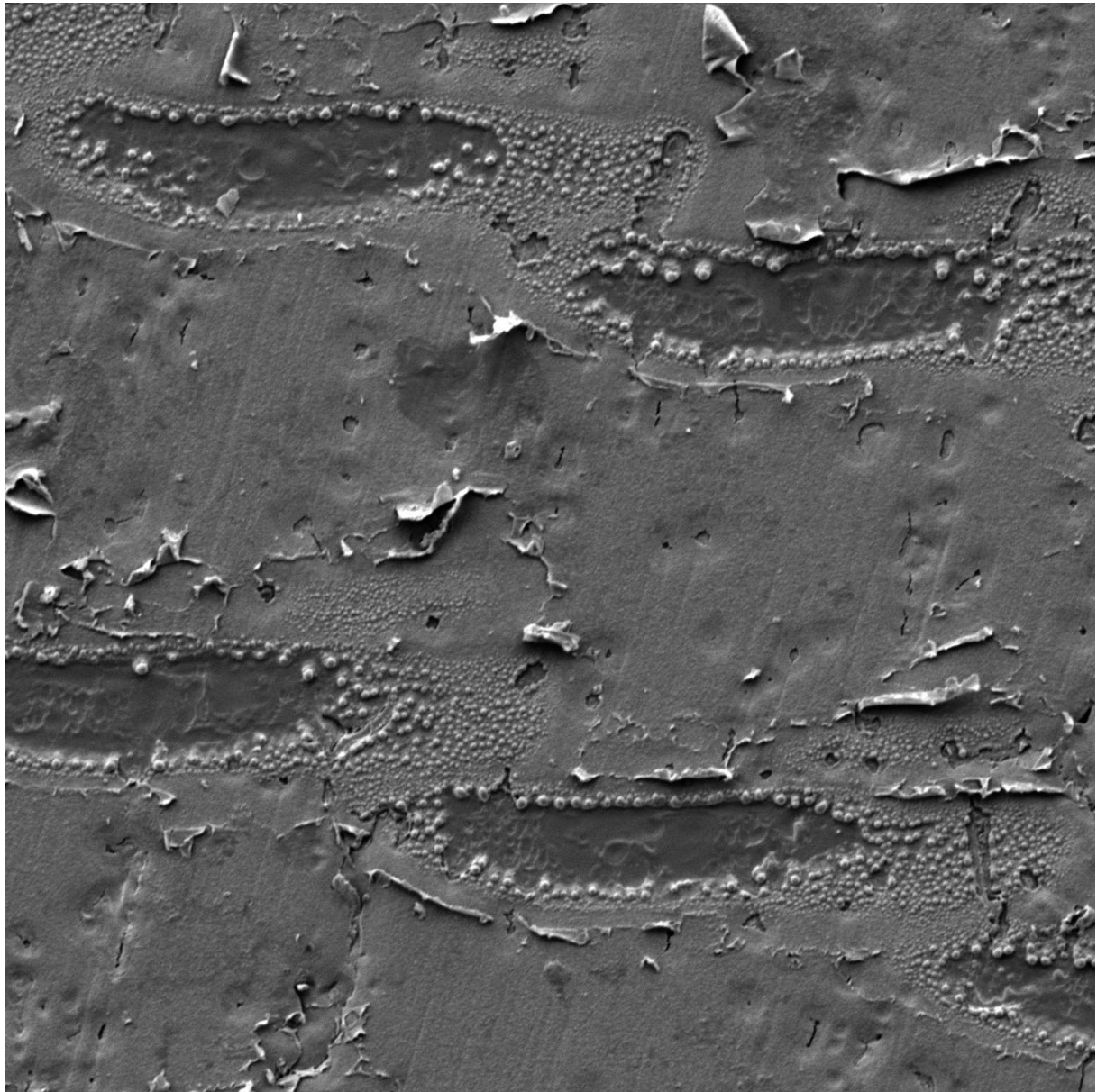
100  $\mu\text{m}$

VEGA\\ TESCAN

Performance in nanospace

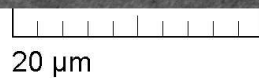


Fig: Naldi\_130527\_04.tif,



SEM HV: 5.00 kV  
View field: 96.30  $\mu\text{m}$   
SEM MAG: 4.50 kx

WD: 16.57 mm  
Det: SE  
Date(m/d/y): 05/27/13



VEGA\\ TESCAN

Performance in nanospace



Fig: Naldi\_130527\_05.tif,



SEM HV: 5.00 kV  
View field: 963.0  $\mu\text{m}$   
SEM MAG: 450 x

WD: 16.59 mm  
Det: SE  
Date(m/d/y): 05/27/13

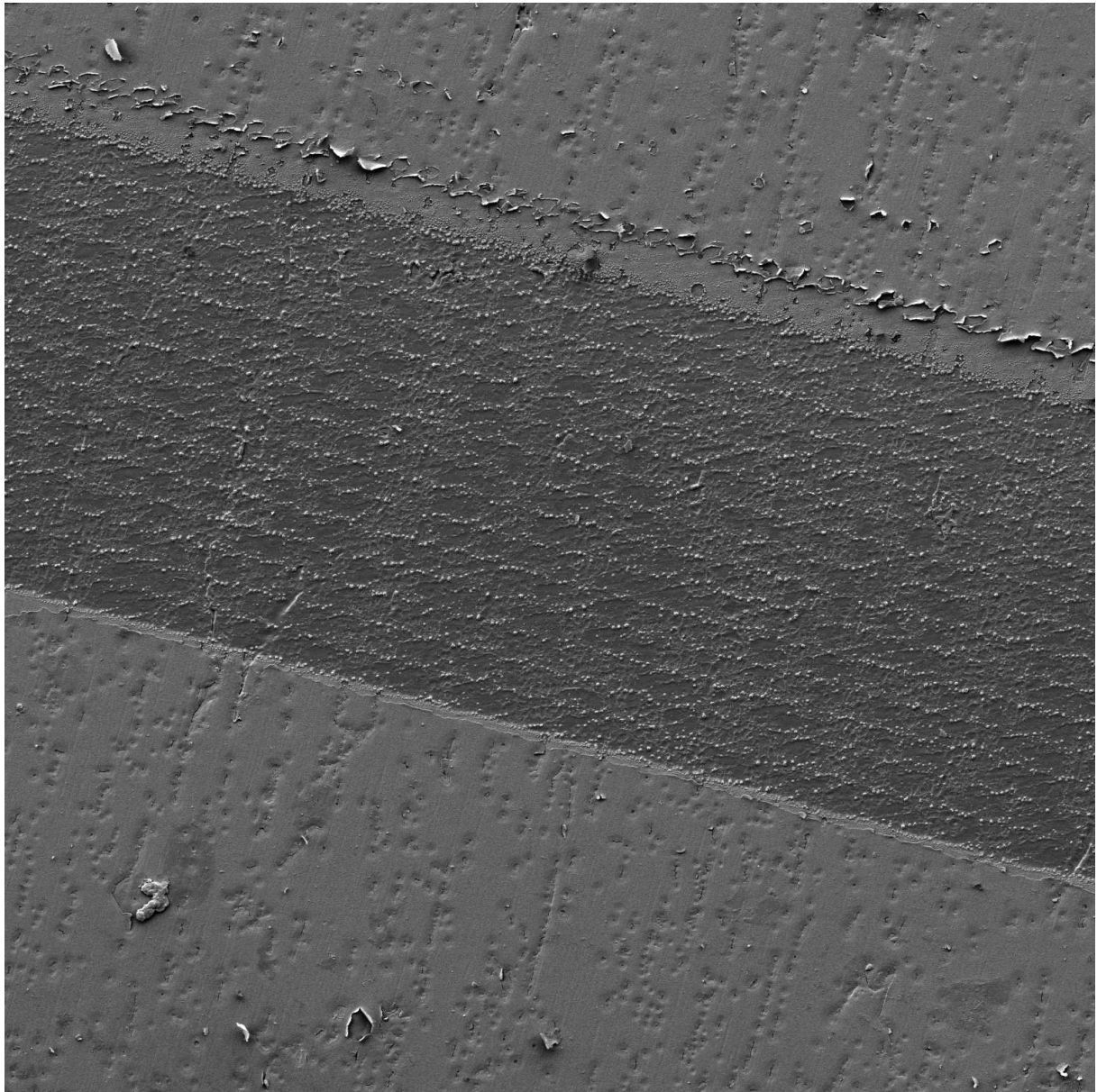
200  $\mu\text{m}$

VEGA\\ TESCAN

Performance in nanospace

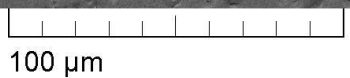


Fig: Naldi\_130527\_06.tif,



SEM HV: 5.00 kV  
View field: 361.1  $\mu$ m  
SEM MAG: 1.20 kx

WD: 16.60 mm  
Det: SE  
Date(m/d/y): 05/27/13

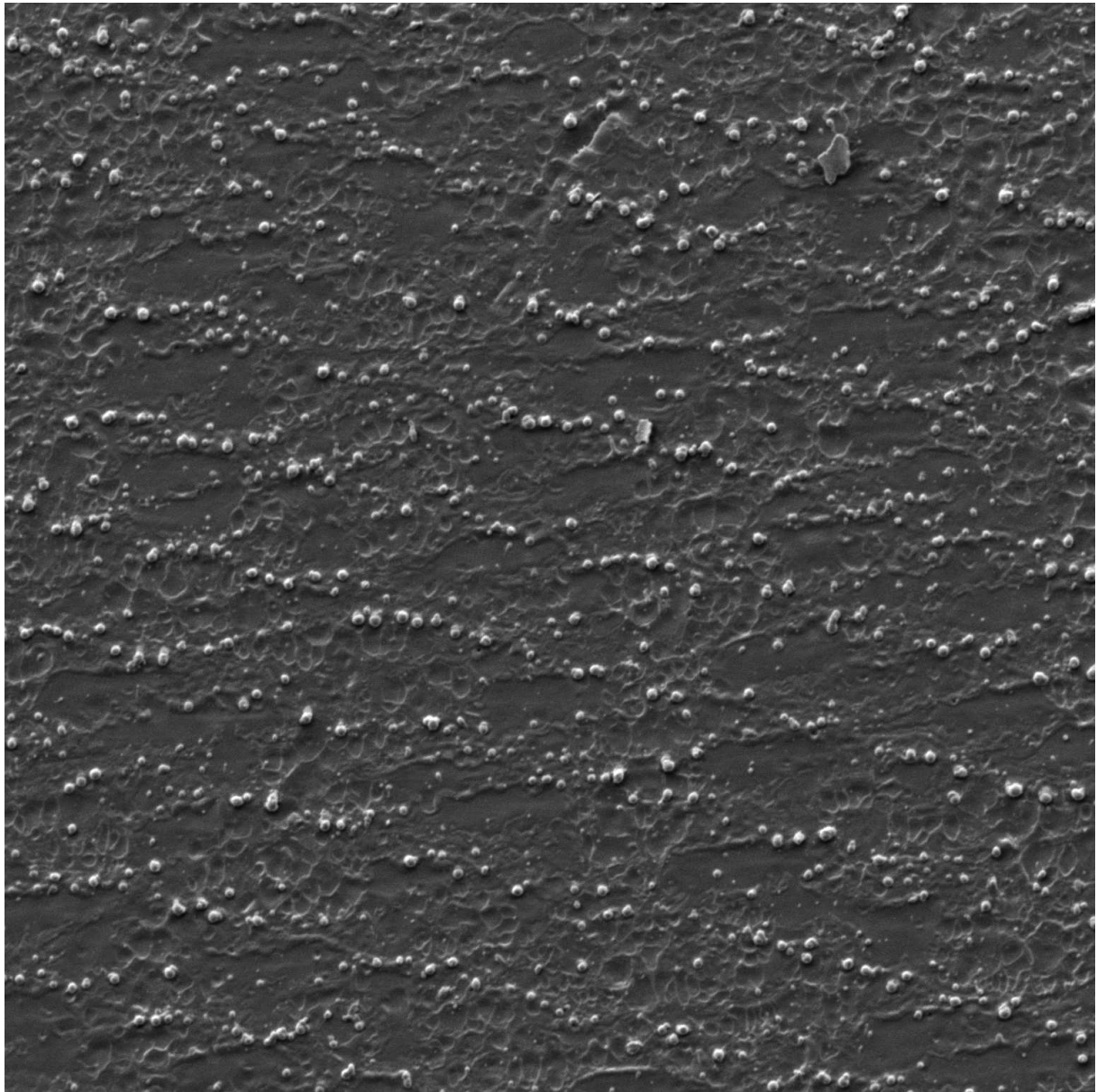


VEGA\\ TESCAN

Performance in nanospace

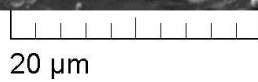


Fig: Naldi\_130527\_07.tif,



SEM HV: 5.00 kV  
View field: 96.30  $\mu\text{m}$   
SEM MAG: 4.50 kx

WD: 16.59 mm  
Det: SE  
Date(m/d/y): 05/27/13

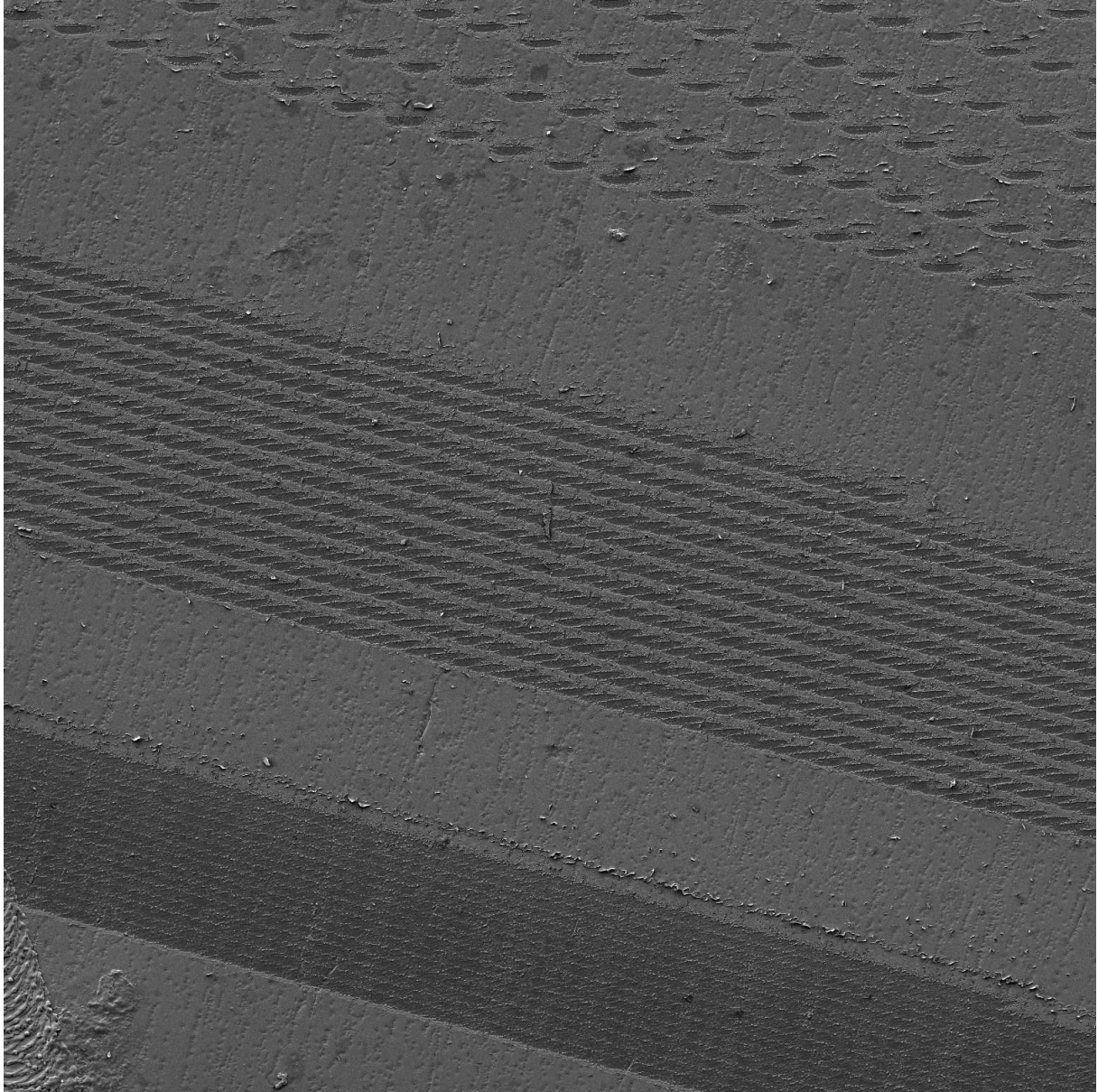


VEGA\\ TESCAN

Performance in nanospace



Fig: Naldi\_130527\_08.tif,



SEM HV: 5.00 kV  
View field: 963.0  $\mu\text{m}$   
SEM MAG: 450 x

WD: 16.71 mm  
Det: SE  
Date(m/d/y): 05/27/13

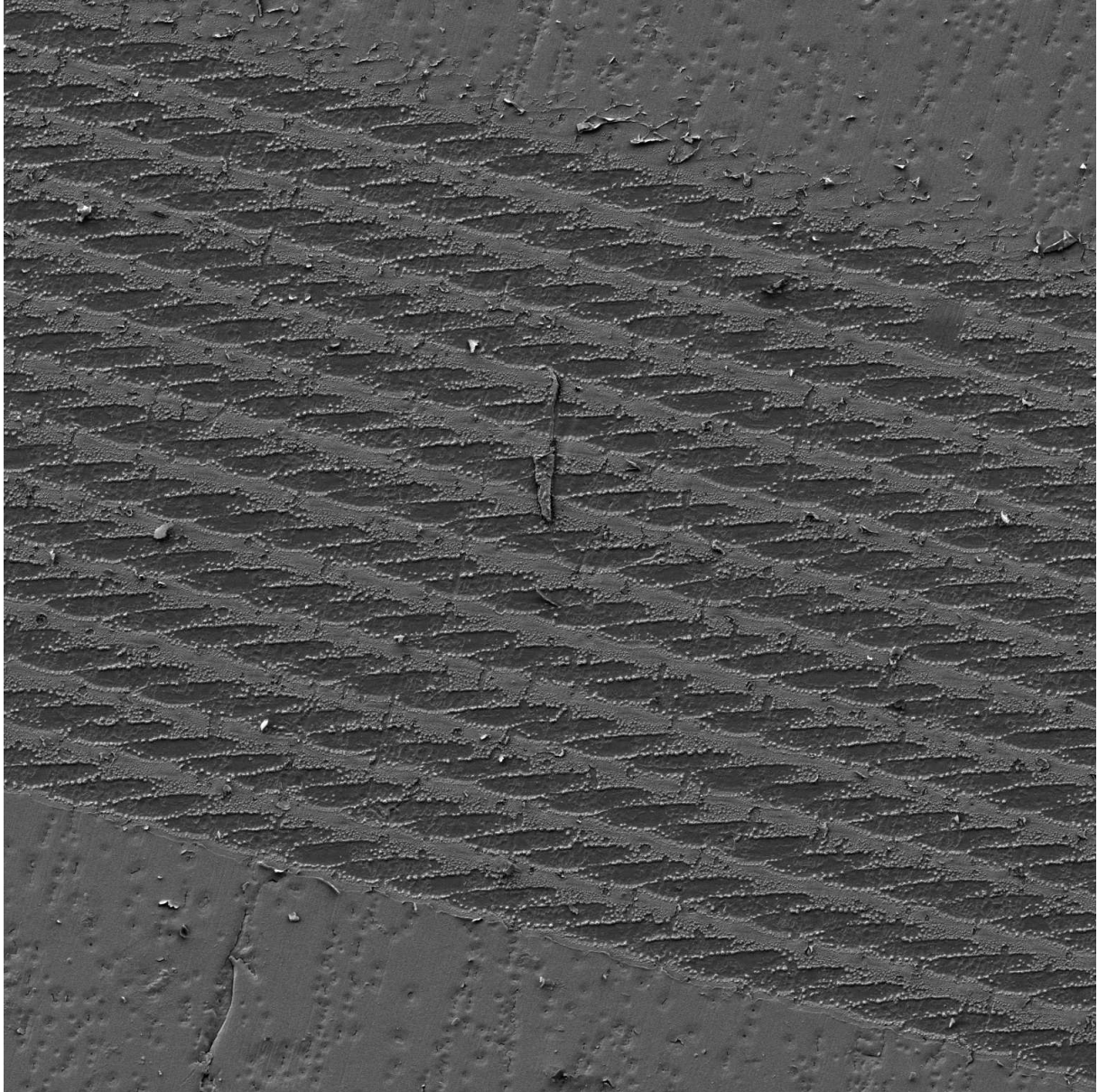
200  $\mu\text{m}$

VEGA\\ TESCAN

Performance in nanospace



Fig: Naldi\_130527\_09.tif,



SEM HV: 5.00 kV  
View field: 361.1  $\mu\text{m}$   
SEM MAG: 1.20 kx

WD: 16.71 mm  
Det: SE  
Date(m/d/y): 05/27/13

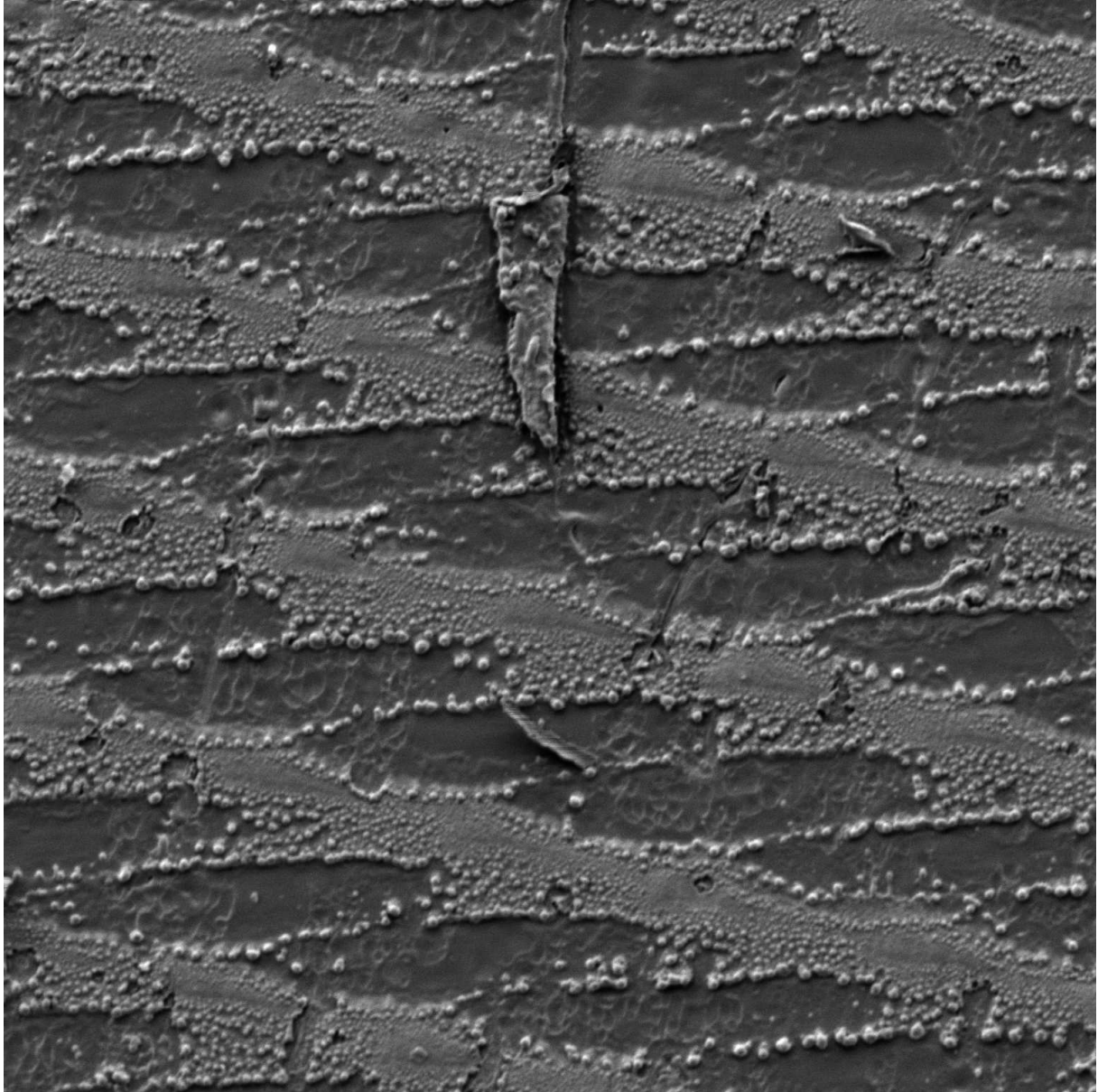
100  $\mu\text{m}$

VEGA\\ TESCAN

Performance in nanospace

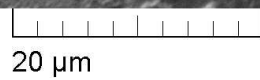


Fig: Naldi\_130527\_10.tif,



SEM HV: 5.00 kV  
View field: 96.30  $\mu\text{m}$   
SEM MAG: 4.50 kx

WD: 16.71 mm  
Det: SE  
Date(m/d/y): 05/27/13

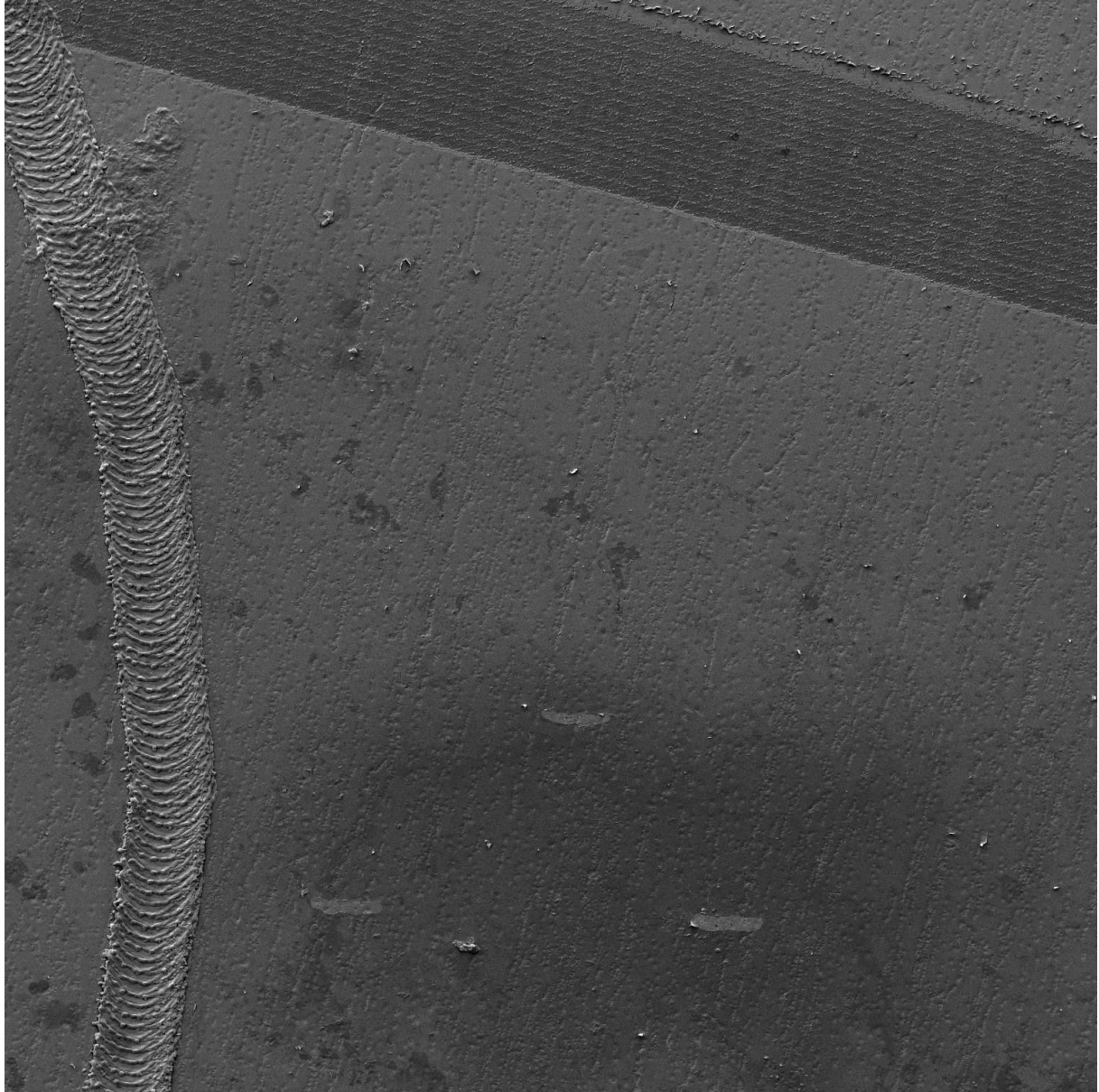


VEGA\\ TESCAN

Performance in nanospace

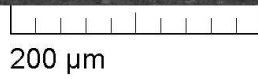


Fig: Naldi\_130527\_11.tif,



SEM HV: 5.00 kV  
View field: 963.0  $\mu\text{m}$   
SEM MAG: 450 x

WD: 16.71 mm  
Det: SE  
Date(m/d/y): 05/27/13



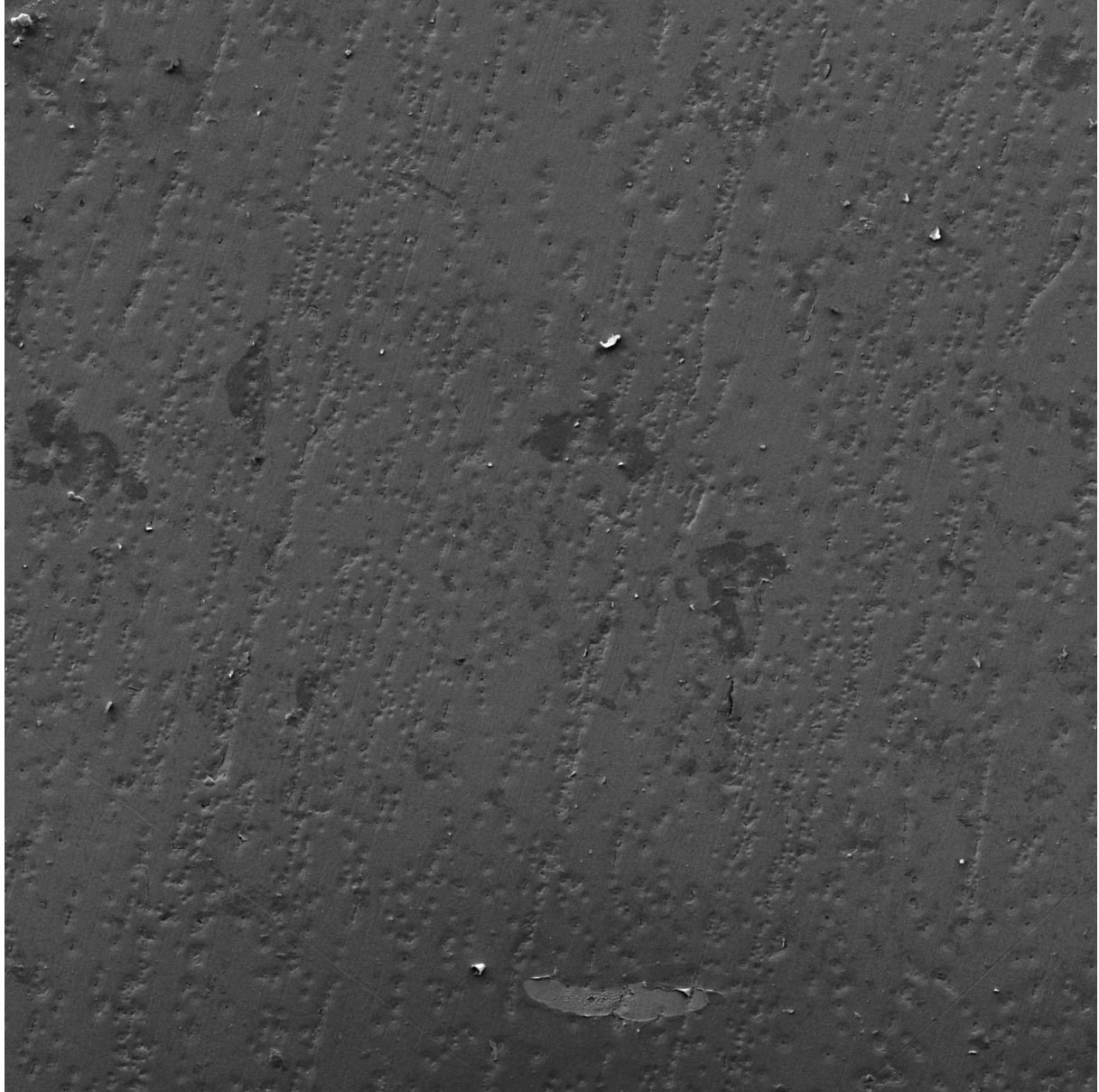
200  $\mu\text{m}$

VEGA\\ TESCAN

Performance in nanospace



Fig: Naldi\_130527\_12.tif,



SEM HV: 5.00 kV  
View field: 361.1  $\mu$ m  
SEM MAG: 1.20 kx

WD: 16.71 mm  
Det: SE  
Date(m/d/y): 05/27/13

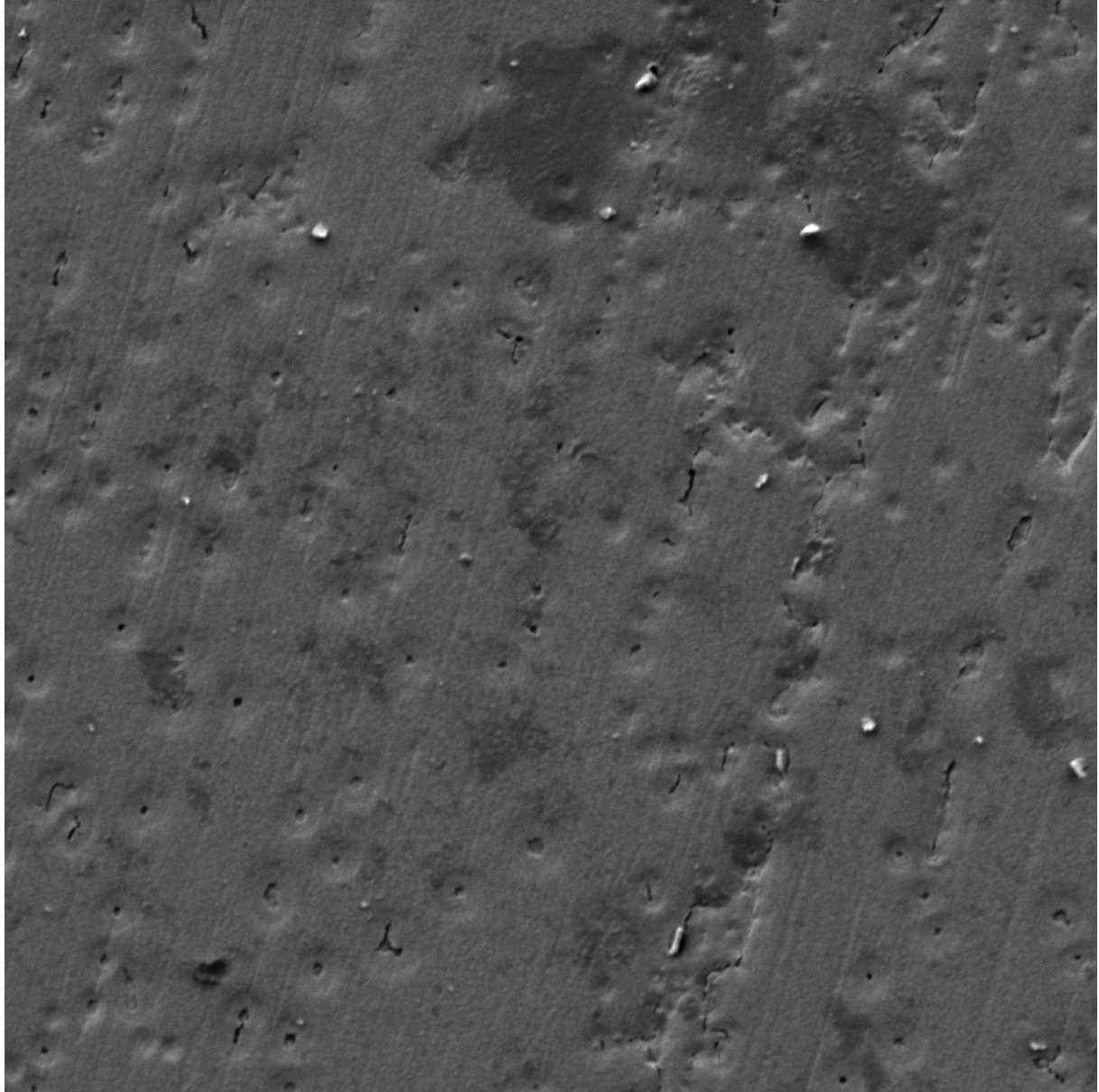
100  $\mu$ m

VEGA\\ TESCAN

Performance in nanospace

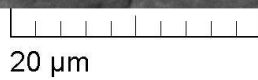


Fig: Naldi\_130527\_13.tif,



SEM HV: 5.00 kV  
View field: 96.30  $\mu\text{m}$   
SEM MAG: 4.50 kx

WD: 16.71 mm  
Det: SE  
Date(m/d/y): 05/27/13



VEGA\\ TESCAN

Performance in nanospace

